

For Research Use Only

RPL28 Polyclonal antibody

Catalog Number: 16649-1-AP **9 Publications**



Basic Information

| | | |
|---|--|---|
| Catalog Number: 16649-1-AP | GenBank Accession Number: BC010173 | Purification Method: Antigen affinity purification |
| Size: 300 µg/ml | GeneID (NCBI): 6158 | Recommended Dilutions: WB 1:500-1:3000 IF 1:10-1:100 |
| Source: Rabbit | UNIPROT ID: P46779 | |
| Isotype: IgG | Full Name: ribosomal protein L28 | |
| Immunogen Catalog Number: AG10036 | Calculated MW: 137 aa, 16 kDa | |
| | Observed MW: 16 kDa | |

Applications

| | |
|--|--|
| Tested Applications: IF/ICC, WB, ELISA | Positive Controls: WB : HeLa cells, NIH/3T3 cells IF : HepG2 cells, |
| Cited Applications: WB, IF, FC | |
| Species Specificity: human, mouse, rat | |
| Cited Species: human, mouse | |

Background Information

Notable Publications

| Author | Pubmed ID | Journal | Application |
|------------------------|-----------|----------|-------------|
| Adrien Labriet | 31506518 | Sci Rep | |
| Patricia Altea-Manzano | 36327975 | Mol Cell | WB |
| Qianxing Zou | 34825148 | iScience | WB, IF |

Storage

Storage:
Store at -20°C. Stable for one year after shipment.
Storage Buffer:
PBS with 0.02% sodium azide and 50% glycerol pH 7.3.
Aliquoting is unnecessary for -20°C storage

For technical support and original validation data for this product please contact:

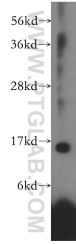
T: 4006900926

E: Proteintech-CN@ptglab.com

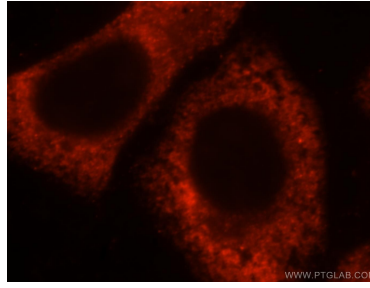
W: ptgcn.com

This product is exclusively available under Proteintech Group brand and is not available to purchase from any other manufacturer.

Selected Validation Data



HeLa cells were subjected to SDS PAGE followed by western blot with 16649-1-AP (RPL28 antibody) at dilution of 1:1000 incubated at room temperature for 1.5 hours.



Immunofluorescent analysis of HepG2 cells, using RPL28 antibody 16649-1-AP at 1:25 dilution and Rhodamine-labeled goat anti-rabbit IgG (red).