

For Research Use Only

EPLIN Polyclonal antibody, PBS Only

Catalog Number: 16639-1-PBS

Featured Product



Basic Information

Catalog Number:

16639-1-PBS

Concentration:

1 mg/ml

Source:

Rabbit

Isotype:

IgG

Immunogen Catalog Number:

AG9994

GenBank Accession Number:

BC001247

GeneID (NCBI):

51474

UNIPROT ID:

Q9UHB6

Full Name:

LIM domain and actin binding 1

Calculated MW:

85 kDa

Observed MW:

90 kDa, 110 kDa

Purification Method:

Antigen affinity purification

Applications

Tested Applications:

WB, IHC, IF/ICC, IP, Indirect ELISA

Species Specificity:

human, mouse, rat

Background Information

EPLIN is a cytoskeletal protein that is preferentially expressed in epithelial cells and is implicated in regulation of cytoskeletal dynamics and cytokinesis. In human, there are two known isoforms, EPLIN- α and - β , generated by alternative promoter usage from a single gene. The 110 kDa EPLIN- β isoform represents the full-length protein and the 90 kDa EPLIN- α isoform lacks the amino-terminal 160 amino acids. EPLIN- α expression is often down-regulated in cancerous cells and tissues. (PMID: 10806352, 31644899)

Storage

Storage:

Store at -80°C .

The product is shipped with ice packs. Upon receipt, store it immediately at -80°C

Storage Buffer:

PBS only, pH7.3

For technical support and original validation data for this product please contact:

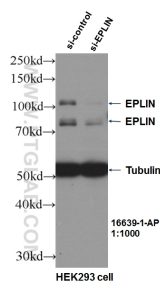
T: 4006900926

E: Proteintech-CN@ptglab.com

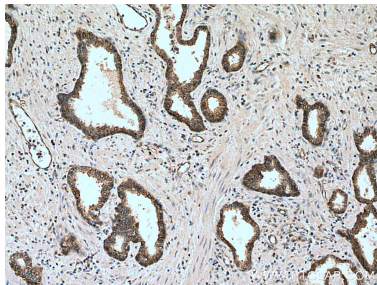
W: ptgcn.com

This product is exclusively available under Proteintech Group brand and is not available to purchase from any other manufacturer.

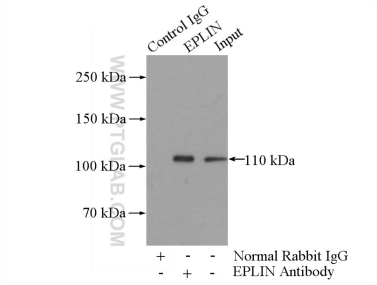
Selected Validation Data



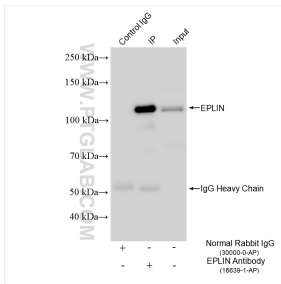
WB result of EPLIN antibody (16639-1-AP, 1:1000) with si-Control and si-EPLIN transfected HEK293 cells. This data was developed using the same antibody clone with 16639-1-PBS in a different storage buffer formulation.



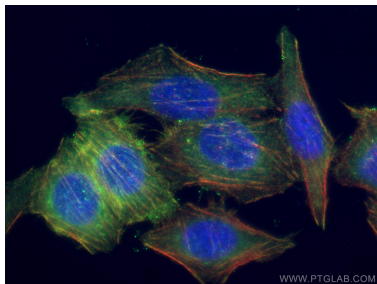
Immunohistochemical analysis of paraffin-embedded human prostate cancer tissue slide using 16639-1-AP (EPLIN antibody) at dilution of 1:200 (under 10x lens). Heat mediated antigen retrieval with Tris-EDTA buffer (pH 9.0). This data was developed using the same antibody clone with 16639-1-PBS in a different storage buffer formulation.



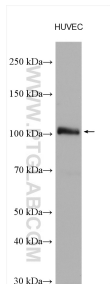
IP result of anti-EPLIN (IP:16639-1-AP, 4ug; Detection:16639-1-AP 1:500) with mouse liver tissue lysate 4000ug. This data was developed using the same antibody clone with 16639-1-PBS in a different storage buffer formulation.



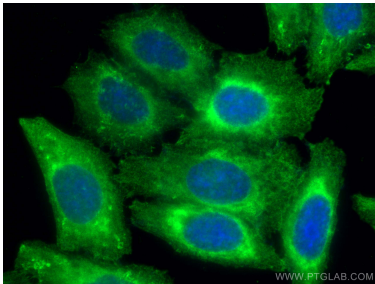
IP result of anti-EPLIN (IP:16639-1-AP, 4ug; Detection:16639-1-AP 1:8000) with HepG2 cells lysate 1480 ug. This data was developed using the same antibody clone with 16639-1-PBS in a different storage buffer formulation.



Immunofluorescent analysis of (-20°C Ethanol) fixed PC-3 cells using EPLIN antibody (16639-1-AP) at dilution of 1:200 and CoraLite®488-Conjugated AffiniPure Goat Anti-Rabbit IgG(H+L), CL594-Phalloidin (red). This data was developed using the same antibody clone with 16639-1-PBS in a different storage buffer formulation.



HUVEC cells were subjected to SDS PAGE followed by western blot with 16639-1-AP (EPLIN antibody) at dilution of 1:10000 incubated at room temperature for 1.5 hours. This data was developed using the same antibody clone with 16639-1-PBS in a different storage buffer formulation.



Immunofluorescent analysis of (-20°C Ethanol) fixed HepG2 cells using EPLIN antibody (16639-1-AP) at dilution of 1:200 and CoraLite®488-Conjugated AffiniPure Goat Anti-Rabbit IgG(H+L). This data was developed using the same antibody clone with 16639-1-PBS in a different storage buffer formulation.