

For Research Use Only

# EPLIN Polyclonal antibody

Catalog Number: 16639-1-AP

Featured Product

5 Publications



## Basic Information

### Catalog Number:

16639-1-AP

### Concentration:

500 ug/ml

### Source:

Rabbit

### Isotype:

IgG

### Immunogen Catalog Number:

AG9994

### GenBank Accession Number:

BC001247

### GeneID (NCBI):

51474

### UNIPROT ID:

Q9UHB6

### Full Name:

LIM domain and actin binding 1

### Calculated MW:

85 kDa

### Observed MW:

90 kDa, 110 kDa

### Purification Method:

Antigen affinity purification

### Recommended Dilutions:

WB 1:5000-1:50000

IP 0.5-4.0 ug for 1.0-3.0 mg of total protein lysate

IHC 1:50-1:500

IF/ICC 1:50-1:500

## Applications

### Tested Applications:

WB, IHC, IF/ICC, IP, ELISA

### Cited Applications:

WB, IHC, IF

### Species Specificity:

human, mouse, rat

### Cited Species:

human, mouse

**Note-IHC: suggested antigen retrieval with TE buffer pH 9.0; (\*) Alternatively, antigen retrieval may be performed with citrate buffer pH 6.0**

### Positive Controls:

**WB:** HUVEC cells, HEK-293 cells, human placenta tissue

**IP:** mouse liver tissue,

**IHC:** human prostate cancer tissue, human pancreas cancer tissue

**IF/ICC:** PC-3 cells, HepG2 cells

## Background Information

EPLIN is a cytoskeletal protein that is preferentially expressed in epithelial cells and is implicated in regulation of cytoskeletal dynamics and cytokinesis. In human, there are two known isoforms, EPLIN-a and -b, generated by alternative promoter usage from a single gene. The 110 kDa EPLIN- $\beta$  isoform represents the full-length protein and the 90 kDa EPLIN- $\alpha$  isoform lacks the amino-terminal 160 amino acids. EPLIN-a expression is often down-regulated in cancerous cells and tissues. (PMID: 10806352, 31644899)

## Notable Publications

Author	Pubmed ID	Journal	Application
Qianqian Yang	36434041	Exp Mol Med	WB
Erik S Linklater	33999101	J Cell Biol	IHC
Shihoko Miyazaki	35821749	Acta Histochem Cytochem	IF

## Storage

### Storage:

Store at -20°C. Stable for one year after shipment.

### Storage Buffer:

PBS with 0.02% sodium azide and 50% glycerol pH 7.3.

Aliquoting is unnecessary for -20°C storage

For technical support and original validation data for this product please contact:

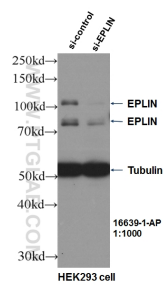
T: 4006900926

E: [Proteintech-CN@ptglab.com](mailto:Proteintech-CN@ptglab.com)

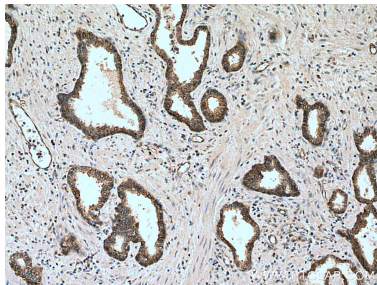
W: [ptgcn.com](http://ptgcn.com)

**This product is exclusively available under Proteintech Group brand and is not available to purchase from any other manufacturer.**

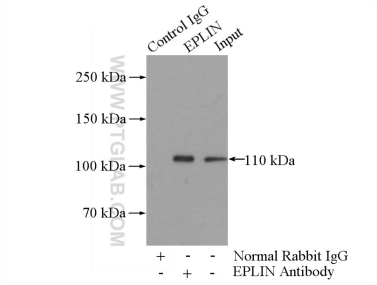
Selected Validation Data



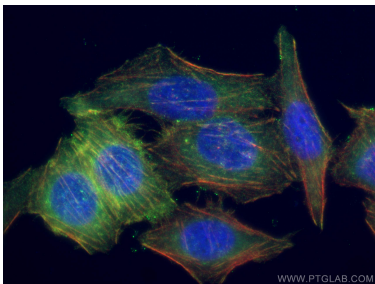
WB result of EPLIN antibody (16639-1-AP, 1:1000) with si-Control and si-EPLIN transfected HEK293 cells.



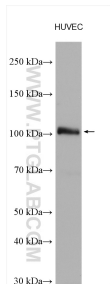
Immunohistochemical analysis of paraffin-embedded human prostate cancer tissue slide using 16639-1-AP (EPLIN antibody) at dilution of 1:200 (under 10x lens). Heat mediated antigen retrieval with Tris-EDTA buffer (pH 9.0).



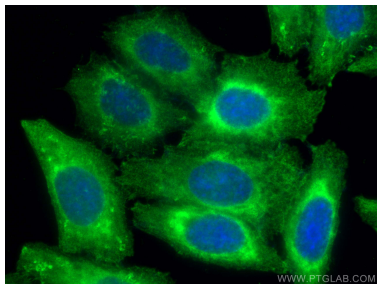
IP result of anti-EPLIN (IP:16639-1-AP, 4ug; Detection:16639-1-AP 1:500) with mouse liver tissue lysate 4000ug.



Immunofluorescent analysis of (-20°C Ethanol) fixed PC-3 cells using EPLIN antibody (16639-1-AP) at dilution of 1:200 and CoraLite®488-Conjugated AffiniPure Goat Anti-Rabbit IgG(H+L), CL594-Phalloidin (red).



HUVEC cells were subjected to SDS PAGE followed by western blot with 16639-1-AP (EPLIN antibody) at dilution of 1:10000 incubated at room temperature for 1.5 hours.



Immunofluorescent analysis of (-20°C Ethanol) fixed HepG2 cells using EPLIN antibody (16639-1-AP) at dilution of 1:200 and CoraLite®488-Conjugated AffiniPure Goat Anti-Rabbit IgG(H+L).