

For Research Use Only

# CCDC22 Polyclonal antibody

Catalog Number: 16636-1-AP

Featured Product

18 Publications



## Basic Information

Catalog Number:

16636-1-AP

Size:

600 ug/ml

Source:

Rabbit

Isotype:

IgG

Immunogen Catalog Number:

AG9980

GenBank Accession Number:

BC000972

GeneID (NCBI):

28952

UNIPROT ID:

O60826

Full Name:

coiled-coil domain containing 22

Calculated MW:

71 kDa

Observed MW:

71 kDa

Purification Method:

Antigen affinity purification

Recommended Dilutions:

WB 1:500-1:2000

IP 0.5-4.0 ug for 1.0-3.0 mg of total protein lysate

## Applications

Tested Applications:

WB, IP, ELISA

Cited Applications:

WB, IP, CoIP

Species Specificity:

human, mouse, rat

Cited Species:

human, mouse

Positive Controls:

WB : human brain tissue, HEK-293 cells, HepG2 cells, mouse colon tissue, mouse lung tissue, rat colon tissue, HeLa cells, Jurkat cells

IP : mouse lung tissue,

## Background Information

### Notable Publications

Author	Pubmed ID	Journal	Application
Kerrie E McNally	28892079	Nat Cell Biol	WB
Dandan Qi	26331702	Mol Biosyst	WB
Michael D Healy	36302387	Structure	WB

## Storage

Storage:

Store at -20°C. Stable for one year after shipment.

Storage Buffer:

PBS with 0.02% sodium azide and 50% glycerol pH 7.3.

Aliquoting is unnecessary for -20°C storage

For technical support and original validation data for this product please contact:

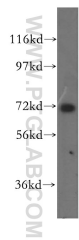
T: 4006900926

E: [Proteintech-CN@ptglab.com](mailto:Proteintech-CN@ptglab.com)

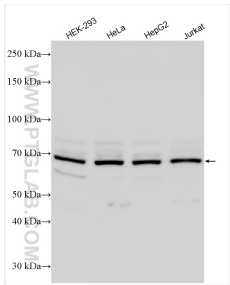
W: [ptgcn.com](http://ptgcn.com)

This product is exclusively available under Proteintech Group brand and is not available to purchase from any other manufacturer.

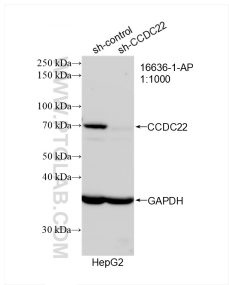
Selected Validation Data



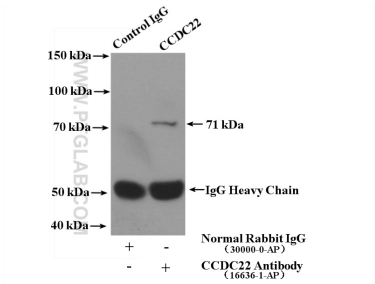
human brain tissue were subjected to SDS PAGE followed by western blot with 16636-1-AP (CCDC22 antibody) at dilution of 1:500 incubated at room temperature for 1.5 hours.



Various lysates were subjected to SDS PAGE followed by western blot with 16636-1-AP (CCDC22 antibody) at dilution of 1:1500 incubated at room temperature for 1.5 hours.



WB result of CCDC22 antibody (16636-1-AP; 1:1000; incubated at room temperature for 1.5 hours) with sh-Control and sh-CCDC22 transfected HepG2 cells.



IP result of anti-CCDC22 (IP:16636-1-AP, 4ug; Detection:16636-1-AP 1:600) with mouse lung tissue lysate 3600ug.