

For Research Use Only

RTF2 Polyclonal antibody

Catalog Number: 16633-1-AP

Featured Product

2 Publications



Basic Information

Catalog Number:

16633-1-AP

Size:

800 µg/ml

Source:

Rabbit

Isotype:

IgG

Immunogen Catalog Number:

AG9972

GenBank Accession Number:

BC003359

GeneID (NCBI):

51507

UNIPROT ID:

Q9BY42

Full Name:

chromosome 20 open reading frame

43

Calculated MW:

34 kDa

Observed MW:

35-40 kDa

Purification Method:

Antigen affinity purification

Recommended Dilutions:

WB 1:1000-1:4000

IP 0.5-4.0 µg for 1.0-3.0 mg of total protein lysate

IF/ICC 1:200-1:800

Applications

Tested Applications:

WB, IP, IF/ICC, ELISA

Cited Applications:

WB

Species Specificity:

human, mouse, rat

Cited Species:

human, mouse

Positive Controls:

WB : MCF-7 cells, HeLa cells

IP : HeLa cells,

IF/ICC : HeLa cells,

Background Information

The function of C20orf43 remains largely unknown. Catalog#16633-1-AP is a rabbit polyclonal antibody raised against the full-length of human C20orf43. The MW of this protein is 40 kDa, and this antibody specially recognises the 40 kDa protein.

Notable Publications

Author	Pubmed ID	Journal	Application
Molly C Kottemann	29290612	Mol Cell	WB
Brooke A Conti	36993543	bioRxiv	WB

Storage

Storage:

Store at -20°C. Stable for one year after shipment.

Storage Buffer:

PBS with 0.02% sodium azide and 50% glycerol pH 7.3.

Aliquoting is unnecessary for -20°C storage

For technical support and original validation data for this product please contact:

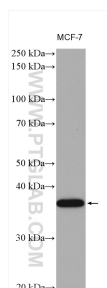
T: 4006900926

E: Proteintech-CN@ptglab.com

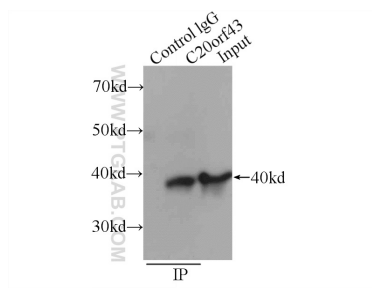
W: ptgcn.com

This product is exclusively available under Proteintech Group brand and is not available to purchase from any other manufacturer.

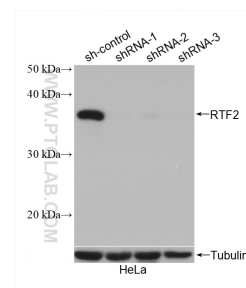
Selected Validation Data



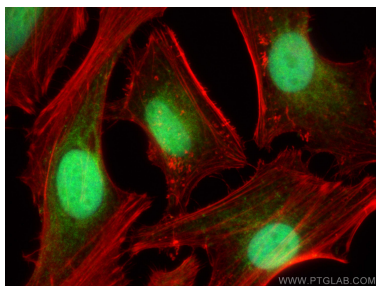
MCF-7 cells were subjected to SDS PAGE followed by western blot with 16633-1-AP (RTF2 antibody) at dilution of 1:2000 incubated at room temperature for 1.5 hours.



IP result of anti-RTF2 (IP:16633-1-AP, 3ug; Detection:16633-1-AP 1:500) with HeLa cells lysate 3440ug.



WB result of RTF2 antibody (16633-1-AP; 1:1000; incubated at room temperature for 1.5 hours) with sh-Control and sh-RTF2 transfected HeLa cells.



Immunofluorescent analysis of (4% PFA) fixed HeLa cells using RTF2 antibody (16633-1-AP) at dilution of 1:400 and CoraLite® 488-Conjugated AffiniPure Goat Anti-Rabbit IgG(H+L), CL594-phalloidin (red).