

For Research Use Only

TMLHE Polyclonal antibody

Catalog Number: 16621-1-AP

Featured Product

3 Publications



Basic Information

Catalog Number:

16621-1-AP

Size:

300 µg/ml

Source:

Rabbit

Isotype:

IgG

Immunogen Catalog Number:

AG9919

GenBank Accession Number:

BC025269

GeneID (NCBI):

55217

UNIPROT ID:

Q9NVH6

Full Name:

trimethyllysine hydroxylase, epsilon

Calculated MW:

376 aa, 44 kDa

Observed MW:

44 kDa

Purification Method:

Antigen affinity purification

Recommended Dilutions:

WB 1:500-1:1000

Applications

Tested Applications:

WB, ELISA

Cited Applications:

WB

Species Specificity:

human, mouse, rat

Cited Species:

human, mouse

Positive Controls:

WB : human liver tissue, rat kidney tissue, Jurkat cells

Background Information

Trimethyllysine dioxygenase (TMLHE) encodes the first enzyme in carnitine biosynthesis, N6-trimethyllysine dioxygenase (TMLD) and enzyme deficiency was suggested to be a risk factor for ASD.

Notable Publications

Author	Pubmed ID	Journal	Application
Aileen Mendoza	34506728	Cell Chem Biol	WB
Chengheng Liao	32690540	Cancer Discov	WB
Zhigang Xie	26832401	Cell Rep	WB

Storage

Storage:

Store at -20°C. Stable for one year after shipment.

Storage Buffer:

PBS with 0.02% sodium azide and 50% glycerol pH 7.3.

Aliquoting is unnecessary for -20°C storage

For technical support and original validation data for this product please contact:

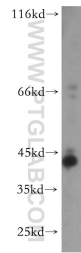
T: 4006900926

E: Proteintech-CN@ptglab.com

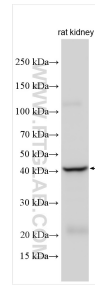
W: ptgcn.com

This product is exclusively available under Proteintech Group brand and is not available to purchase from any other manufacturer.

Selected Validation Data



human liver tissue were subjected to SDS PAGE followed by western blot with 16621-1-AP (TMLHE antibody) at dilution of 1:500 incubated at room temperature for 1.5 hours.



rat kidney tissue were subjected to SDS PAGE followed by western blot with 16621-1-AP (TMLHE antibody) at dilution of 1:2000 incubated at room temperature for 1.5 hours.