

For Research Use Only

PGCP Polyclonal antibody

Catalog Number: 16601-1-AP

4 Publications



Basic Information

Catalog Number:

16601-1-AP

Concentration:

350 µg/ml

Source:

Rabbit

Isotype:

IgG

Immunogen Catalog Number:

AG9770

GenBank Accession Number:

BC020689

GeneID (NCBI):

10404

UNIPROT ID:

Q9Y646

Full Name:

plasma glutamate carboxypeptidase

Calculated MW:

472 aa, 52 kDa

Observed MW:

65-70 kDa

Purification Method:

Antigen affinity purification

Recommended Dilutions:

WB 1:500-1:1000

IP 0.5-4.0 µg for 1.0-3.0 mg of total protein lysate

IF/ICC 1:20-1:200

Applications

Tested Applications:

WB, IF/ICC, IP, ELISA

Cited Applications:

WB

Species Specificity:

human, mouse

Cited Species:

human, rat

Positive Controls:

WB : L02 cells, human placenta tissue, human plasma tissue, mouse kidney tissue

IP : mouse kidney tissue,

IF/ICC : L02 cells,

Background Information

PGCP(plasma glutamate carboxypeptidase) is also named as LCH1,CPQ and belongs to the peptidase M28 family. It may play an important role in the hydrolysis of circulating peptides. It catalyzes more efficiently the hydrolysis of dipeptides with unsubstituted terminals into amino acids. It is a proteinase that acts on the unsubstituted N- and C-termini of dipeptides. It has been suggested that this PGCP is involved in the release of thyroxine(PMID:20951214). Human PGCP is a metalloproteinase with five potential glycosylation sites, whose activity depends on dimerization and it can be detected a band of 65-72kd in FRTL-5 cells which is pro-PGCP(PMID:22127294). It can be N-glycosylated(PMID:10206990). It has the pro-form of 60-65 kDa and mature form of 55 kDa(PMID:20951214).

Notable Publications

Author	Pubmed ID	Journal	Application
Zhe Huang	39833606	Commun Biol	WB
Rong Yang	38853287	J Extracell Vesicles	WB
Mengyan Hu	37402721	Nat Commun	WB

Storage

Storage:

Store at -20°C. Stable for one year after shipment.

Storage Buffer:

PBS with 0.02% sodium azide and 50% glycerol pH 7.3.

Aliquoting is unnecessary for -20°C storage

For technical support and original validation data for this product please contact:

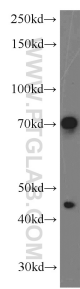
T: 4006900926

E: Proteintech-CN@ptglab.com

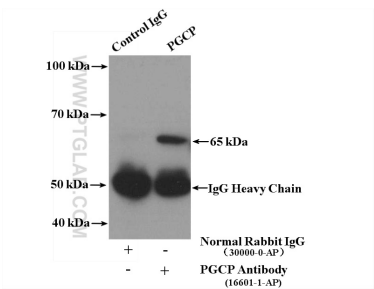
W: ptgcn.com

This product is exclusively available under Proteintech Group brand and is not available to purchase from any other manufacturer.

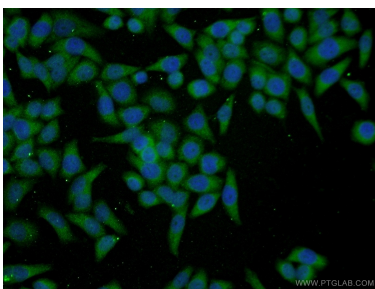
Selected Validation Data



L02 cells were subjected to SDS PAGE followed by western blot with 16601-1-AP (PGCP antibody) at dilution of 1:600 incubated at room temperature for 1.5 hours.



IP result of anti-PGCP (IP:16601-1-AP, 4ug; Detection:16601-1-AP 1:500) with mouse kidney tissue lysate 4000ug.



Immunofluorescent analysis of L02 cells using 16601-1-AP (PGCP antibody) at dilution of 1:50 and Alexa Fluor 488-conjugated Goat Anti-Rabbit IgG(H+L).