

For Research Use Only

SPTLC3 Polyclonal antibody

Catalog Number: 16600-1-AP

1 Publications



Basic Information

Catalog Number:

16600-1-AP

Size:

500 ug/ml

Source:

Rabbit

Isotype:

IgG

Immunogen Catalog Number:

AG9760

GenBank Accession Number:

BC020656

GeneID (NCBI):

55304

UNIPROT ID:

Q9NUV7

Full Name:

serine palmitoyltransferase, long chain base subunit 3

Calculated MW:

175 aa, 20 kDa

Observed MW:

62 kDa

Purification Method:

Antigen affinity purification

Recommended Dilutions:

WB 1:1000-1:4000

IHC 1:250-1:1000

IF/ICC 1:50-1:500

Applications

Tested Applications:

WB, IHC, IF/ICC, ELISA

Cited Applications:

WB

Species Specificity:

human, mouse

Cited Species:

human

Note-IHC: suggested antigen retrieval with TE buffer pH 9.0; (*) Alternatively, antigen retrieval may be performed with citrate buffer pH 6.0

Positive Controls:

WB : HepG2 cells, mouse liver tissue

IHC : human ovary cancer tissue,

IF/ICC : HepG2 cells,

Background Information

Serine-palmitoyltransferase (SPT) is a pyridoxal 5 - phosphate (PLP)-dependent α - oxoaminotransferase that consists of three core subunits-SPTLC1, SPTLC2, and SPTLC3-that share a mutual homology. The amino acid sequences between SPTLC1 and SPTLC2 (or SPTLC3) show a mutual similarity of about 20%, whereas the sequences for SPTLC2 and SPTLC3 show a significantly higher identity of 68% (with 84% similarity) on the amino acid level. SPTLC3 is not or only little expressed in tissues that are functionally connected to erythropoiesis or immune response like peripheral blood cells, bone marrow, and spleen. Instead, the lack of SPTLC3 expression seems to be compensated by increased expression of SPTLC2 in these tissues. (PMID: 17331073, PMID: 17023427)

Notable Publications

Author	Pubmed ID	Journal	Application
Zelin Tian	33163282	Am J Cancer Res	WB

Storage

Storage:

Store at -20°C. Stable for one year after shipment.

Storage Buffer:

PBS with 0.02% sodium azide and 50% glycerol pH 7.3.

Aliquoting is unnecessary for -20°C storage

For technical support and original validation data for this product please contact:

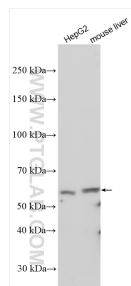
T: 4006900926

E: Proteintech-CN@ptglab.com

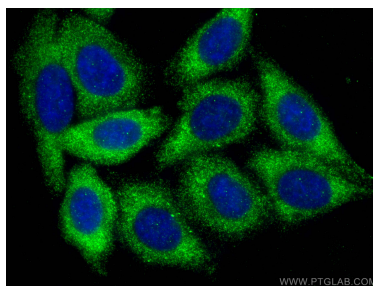
W: ptgcn.com

This product is exclusively available under Proteintech Group brand and is not available to purchase from any other manufacturer.

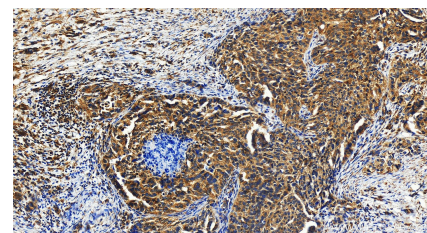
Selected Validation Data



Various lysates were subjected to SDS PAGE followed by western blot with 16600-1-AP (SPTLC3 antibody) at dilution of 1:2000 incubated at room temperature for 1.5 hours.



Immunofluorescent analysis of (-20°C Ethanol) fixed HepG2 cells using SPTLC3 antibody (16600-1-AP) at dilution of 1:200 and CoraLite® 488-Conjugated AffiniPure Goat Anti-Rabbit IgG(H+L).



Immunohistochemical analysis of paraffin-embedded human ovary cancer tissue slide using 16600-1-AP (SPTLC3 antibody) at dilution of 1:500 (under 20x lens). Heat mediated antigen retrieval with Tris-EDTA buffer (pH 9.0).