

For Research Use Only

# MED31 Polyclonal antibody

Catalog Number: 16590-1-AP **1 Publications**



## Basic Information

**Catalog Number:**

16590-1-AP

**Size:**

300 µg/ml

**Source:**

Rabbit

**Isotype:**

IgG

**Immunogen Catalog Number:**

AG9008

**GenBank Accession Number:**

BC012539

**GeneID (NCBI):**

51003

**UNIPROT ID:**

Q9Y3C7

**Full Name:**

mediator complex subunit 31

**Calculated MW:**

131 aa, 16 kDa

**Observed MW:**

16 kDa

**Purification Method:**

Antigen affinity purification

**Recommended Dilutions:**

WB 1:500-1:2000

IF 1:50-1:500

## Applications

**Tested Applications:**

IF/ICC, WB, ELISA

**Cited Applications:**

WB

**Species Specificity:**

human, mouse, rat

**Cited Species:**

mouse

**Positive Controls:**

WB : mouse testis tissue, human brain tissue

IF : HepG2 cells,

## Background Information

MED31, also named as SOH1 or CGI-125, is a 131 amino acid protein, which belongs to the Mediator complex subunit 31 family. MED31 localizes in the nucleus. MED31 as a component of the Mediator complex, a coactivator is involved in the regulated transcription of nearly all RNA polymerase II-dependent genes. MED31 functions as a bridge to convey information from gene-specific regulatory proteins to the basal RNA polymerase II transcription machinery.

## Notable Publications

Author	Pubmed ID	Journal	Application
Risley Michael D MD	20347762	Dev Biol	WB

## Storage

**Storage:**

Store at -20°C. Stable for one year after shipment.

**Storage Buffer:**

PBS with 0.02% sodium azide and 50% glycerol pH 7.3.

Aliquoting is unnecessary for -20°C storage

For technical support and original validation data for this product please contact:

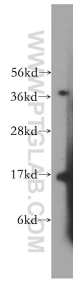
T: 4006900926

E: Proteintech-CN@ptglab.com

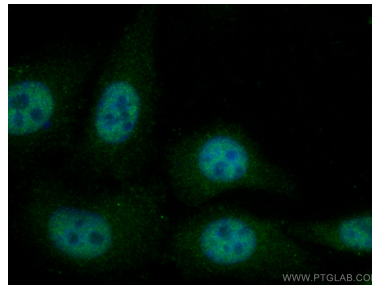
W: ptgcn.com

**This product is exclusively available under Proteintech Group brand and is not available to purchase from any other manufacturer.**

## Selected Validation Data



mouse testis tissue were subjected to SDS PAGE followed by western blot with 16590-1-AP (MED31 antibody) at dilution of 1:600 incubated at room temperature for 1.5 hours.



Immunofluorescent analysis of (4% PFA) fixed HepG2 cells using MED31 antibody (16590-1-AP) at dilution of 1:200 and CoraLite®488-Conjugated AffiniPure Goat Anti-Rabbit IgG(H+L).