

For Research Use Only

# MRPL3 Polyclonal antibody, PBS Only

Catalog Number: 16584-1-PBS



## Basic Information

Catalog Number:

16584-1-PBS

Size:

1 mg/ml

Source:

Rabbit

Isotype:

IgG

Immunogen Catalog Number:

AG9970

GenBank Accession Number:

BC003375

GeneID (NCBI):

11222

UNIPROT ID:

P09001

Full Name:

mitochondrial ribosomal protein L3

Calculated MW:

39 kDa

Observed MW:

35-39 kDa

Purification Method:

Antigen affinity purification

## Applications

Tested Applications:

WB, IHC, Indirect ELISA

Species Specificity:

human, mouse, rat

## Background Information

MRPL3, also named as 39S ribosomal protein L3, mitochondrial or RPML3, is a 348 amino acid protein, which belongs to the ribosomal protein L3P family. MRPL3 localizes in the Mitochondrion and has an association with combined oxidative phosphorylation deficiency 9. MRPL3 plays role in the mitochondrial proteins biosynthesis and ribosomal structure and biogenesis.

## Storage

Storage:

Store at -80°C.

**The product is shipped with ice packs. Upon receipt, store it immediately at -80°C**

Storage Buffer:

PBS Only

For technical support and original validation data for this product please contact:

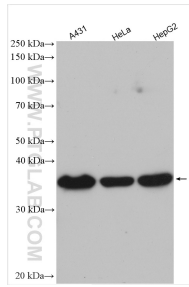
T: 4006900926

E: [Proteintech-CN@ptglab.com](mailto:Proteintech-CN@ptglab.com)

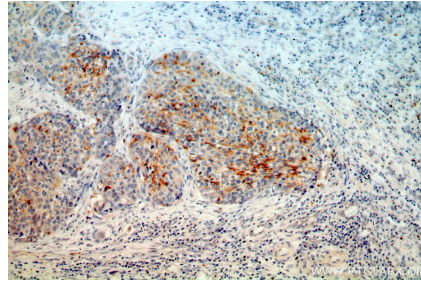
W: [ptgcn.com](http://ptgcn.com)

**This product is exclusively available under Proteintech Group brand and is not available to purchase from any other manufacturer.**

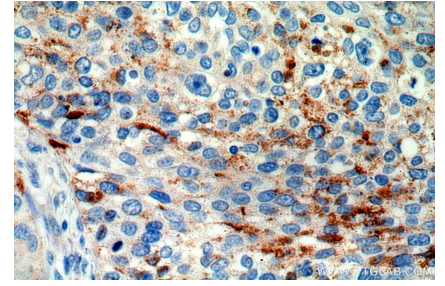
## Selected Validation Data



Various lysates were subjected to SDS PAGE followed by western blot with 16584-1-AP (MRPL3 antibody) at dilution of 1:1500 incubated at room temperature for 1.5 hours. This data was developed using the same antibody clone with 16584-1-PBS in a different storage buffer formulation.



Immunohistochemical analysis of paraffin-embedded human cervical cancer using 16584-1-AP (MRPL3 antibody) at dilution of 1:100 (under 10x lens). This data was developed using the same antibody clone with 16584-1-PBS in a different storage buffer formulation.



Immunohistochemical analysis of paraffin-embedded human cervical cancer using 16584-1-AP (MRPL3 antibody) at dilution of 1:100 (under 40x lens). This data was developed using the same antibody clone with 16584-1-PBS in a different storage buffer formulation.