

# SLFN5 Polyclonal antibody

Catalog Number: 16581-1-AP

## Basic Information

**Catalog Number:**

16581-1-AP

**Size:**

600 µg/ml

**Source:**

Rabbit

**Isotype:**

IgG

**Immunogen Catalog Number:**

AG9959

**GenBank Accession Number:**

BC021238

**GeneID (NCBI):**

162394

**UNIPROT ID:**

Q08AF3

**Full Name:**

schlafen family member 5

**Calculated MW:**

338 aa, 38 kDa

**Observed MW:**

90 kDa

**Purification Method:**

Antigen affinity purification

**Recommended Dilutions:**

WB 1:1000-1:6000

## Applications

**Tested Applications:**

WB, ELISA

**Species Specificity:**

human

**Positive Controls:**

WB : A549 cells, LNCaP cells, SKOV-3 cells, T-47D cells

## Background Information

Schlafen family member 5 (SLFN5) is a member of the Schlafen family of proteins, a group of type 1 IFN-inducible proteins. In addition to an AAA (ATPase) domain and a specific SLFN box, the SLFN5 gene contains a helicase domain as well as a nuclear localization sequence, which suggests a role for this protein in transcription-related processes. A growing number of findings suggest that human Schlafen family member 5 (SLFN5) plays a key role in malignancy.

## Storage

**Storage:**

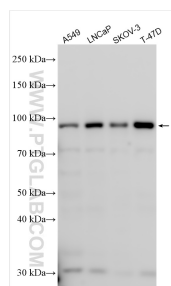
Store at -20°C. Stable for one year after shipment.

**Storage Buffer:**

PBS with 0.02% sodium azide and 50% glycerol pH 7.3.

Aliquoting is unnecessary for -20°C storage

## Selected Validation Data



Various lysates were subjected to SDS PAGE followed by western blot with 16581-1-AP (SLFN5 antibody) at dilution of 1:3000 incubated at room temperature for 1.5 hours.