

# ARSF Polyclonal antibody

Catalog Number: 16561-1-AP

## Basic Information

**Catalog Number:**

16561-1-AP

**Size:**

850 µg/ml

**Source:**

Rabbit

**Isotype:**

IgG

**Immunogen Catalog Number:**

AG9790

**GenBank Accession Number:**

BC022389

**GeneID (NCBI):**

416

**UNIPROT ID:**

P54793

**Full Name:**

arylsulfatase F

**Calculated MW:**

590 aa, 66 kDa

**Observed MW:**

66 kDa

**Purification Method:**

Antigen affinity purification

**Recommended Dilutions:**

WB 1:500-1:1000

## Applications

**Tested Applications:**

WB, ELISA

**Species Specificity:**

Monkey

**Positive Controls:**

WB : COS-7 cells,

## Background Information

Arylsulfatase F (ARSF) is located on the X-chromosome and belongs to the sulfatase family. ARSF exhibits arylsulfatase activity towards the artificial substrate 4-methylumbelliferyl sulfate. ARSF expression is enhanced in the brain, kidney, and skin. The molecular weight of ARSF is 66 kDa.

## Storage

**Storage:**

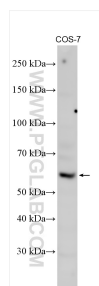
Store at -20°C. Stable for one year after shipment.

**Storage Buffer:**

PBS with 0.02% sodium azide and 50% glycerol pH 7.3.

Aliquoting is unnecessary for -20°C storage

## Selected Validation Data



COS-7 cells were subjected to SDS PAGE followed by western blot with 16561-1-AP (ARSF antibody) at dilution of 1:800 incubated at room temperature for 1.5 hours.