

For Research Use Only

CYP19A1 Polyclonal antibody, PBS Only

Catalog Number: 16554-1-PBS

Featured Product



Basic Information

Catalog Number:

16554-1-PBS

Source:

Rabbit

Isotype:

IgG

Immunogen Catalog Number:

AG9765

GenBank Accession Number:

BC022896

GeneID (NCBI):

1588

UNIPROT ID:

P11511

Full Name:

cytochrome P450, family 19, subfamily A, polypeptide 1

Calculated MW:

20 kDa, 25 kDa, 58 kDa

Observed MW:

55-58 kDa

Purification Method:

Antigen affinity purification

Applications

Tested Applications:

WB, IHC, IF/ICC, IF-P, Indirect ELISA

Species Specificity:

human, mouse, rat

Background Information

CYP19A1 (Cytochrome P450 19A1) is also named as ARO1 (aromatase), CYAR, CYP19, estrogen synthase and belongs to the cytochrome P450 family. It is a terminal enzyme which transforms irreversibly androgens into estrogens and it is present in the endoplasmic reticulum of numerous tissues (PMID:16406261). The gene encodes a protein with the molecular weight between 46 kDa and 69 kDa (PMID:8129748) and the protein can be glycosylated, but the level of glycosylation does not seem to be essential for CYP19A1 activity (PMID:12606587). Brain aromatase may be neuroprotective by increasing the local estrogen levels in injured neurons so that genetic variation in the brain aromatase gene may modify the risk for AD (PMID:16767510).

Storage

Storage:

Store at -80°C.

The product is shipped with ice packs. Upon receipt, store it immediately at -80°C

Storage Buffer:

PBS only, pH7.3

For technical support and original validation data for this product please contact:

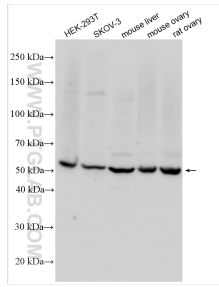
T: 4006900926

E: Proteintech-CN@ptglab.com

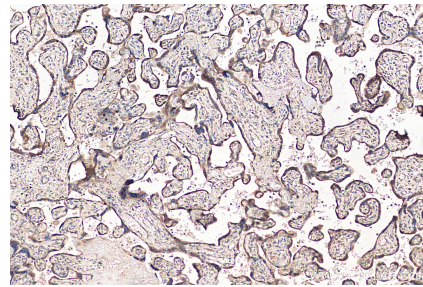
W: ptgcn.com

This product is exclusively available under Proteintech Group brand and is not available to purchase from any other manufacturer.

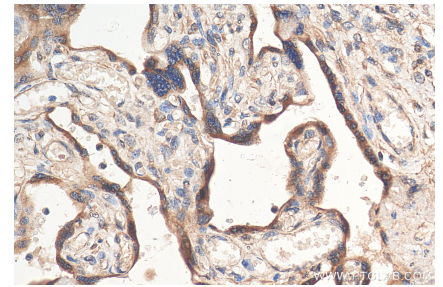
Selected Validation Data



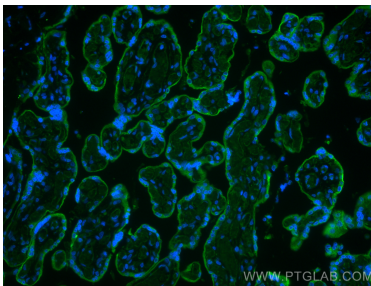
Various lysates were subjected to SDS PAGE followed by western blot with 16554-1-AP (CYP19A1 antibody) at dilution of 1:1000 incubated at room temperature for 1.5 hours. This data was developed using the same antibody clone with 16554-1-PBS in a different storage buffer formulation.



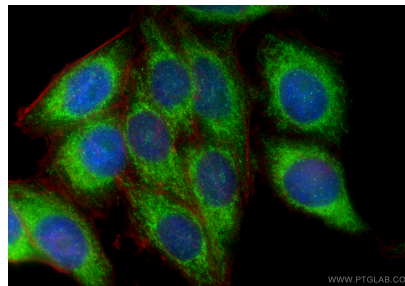
Immunohistochemical analysis of paraffin-embedded human placenta tissue slide using 16554-1-AP (CYP19A1 antibody) at dilution of 1:200 (under 10x lens). Heat mediated antigen retrieval with Tris-EDTA buffer (pH 9.0). This data was developed using the same antibody clone with 16554-1-PBS in a different storage buffer formulation.



Immunohistochemical analysis of paraffin-embedded human placenta tissue slide using 16554-1-AP (CYP19A1 antibody) at dilution of 1:200 (under 40x lens). Heat mediated antigen retrieval with Tris-EDTA buffer (pH 9.0). This data was developed using the same antibody clone with 16554-1-PBS in a different storage buffer formulation.



Immunofluorescent analysis of (4% PFA) fixed human placenta tissue using CYP19A1 antibody (16554-1-AP) at dilution of 1:200 and CoraLite@488-Conjugated AffiniPure Goat Anti-Rabbit IgG(H+L). This data was developed using the same antibody clone with 16554-1-PBS in a different storage buffer formulation.



Immunofluorescent analysis of (4% PFA) fixed HepG2 cells using CYP19A1 antibody (16554-1-AP) at dilution of 1:400 and CoraLite@488-Conjugated Goat Anti-Rabbit IgG(H+L) (SA00013-2), CL594-Phalloidin (red). This data was developed using the same antibody clone with 16554-1-PBS in a different storage buffer formulation.