

For Research Use Only

# SMPDL3B Polyclonal antibody

Catalog Number: 16552-1-AP

Featured Product

4 Publications



## Basic Information

**Catalog Number:**

16552-1-AP

**Size:**

600 µg/ml

**Source:**

Rabbit

**Isotype:**

IgG

**Immunogen Catalog Number:**

AG9535

**GenBank Accession Number:**

BC014444

**GeneID (NCBI):**

27293

**UNIPROT ID:**

Q92485

**Full Name:**

sphingomyelin phosphodiesterase, acid-like 3B

**Calculated MW:**

373aa, 42 kDa; 455aa, 51 kDa

**Observed MW:**

42 kDa, 50-65 kDa

**Purification Method:**

Antigen affinity purification

**Recommended Dilutions:**

WB 1:500-1:2000

IHC 1:250-1:1000

## Applications

**Tested Applications:**

IHC, WB, ELISA

**Cited Applications:**

WB, IF, IHC

**Species Specificity:**

human, mouse, rat

**Cited Species:**

human, rat, mouse, monkey, pig

**Note-IHC: suggested antigen retrieval with TE buffer pH 9.0; (\*) Alternatively, antigen retrieval may be performed with citrate buffer pH 6.0**

**Positive Controls:**

WB : COLO 320 cells, HEK-293 cells

IHC : human kidney tissue, human colon cancer tissue

## Background Information

SMPDL3B is lipid-modulating phosphodiesterase. Active on the surface of macrophages and dendritic cells and strongly influences macrophage lipid composition and membrane fluidity. SMPDL3B acts as a negative regulator of Toll-like receptor signaling. It lacks activity with phosphocholine-containing lipids, but can cleave CDP-choline, and can release phosphate from ATP and ADP in vitro (PMID: 26095358). SMPDL3B can be detected 60-70 kDa by N-glycosylation modification (PMID: 26095358, PMID: 31217420).

## Notable Publications

Author	Pubmed ID	Journal	Application
Taesik Gwag	33294831	JHEP Rep	WB
Xin Li	29923306	Basic Clin Pharmacol Toxicol	WB, IHC
Huiqing Qu	34504869	Front Mol Biosci	WB

## Storage

**Storage:**

Store at -20°C. Stable for one year after shipment.

**Storage Buffer:**

PBS with 0.02% sodium azide and 50% glycerol pH 7.3.

Aliquoting is unnecessary for -20°C storage

For technical support and original validation data for this product please contact:

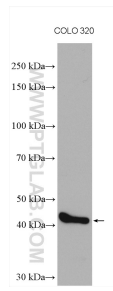
T: 4006900926

E: Proteintech-CN@ptglab.com

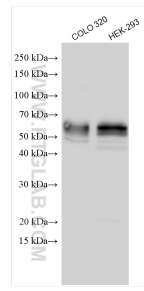
W: ptgcn.com

**This product is exclusively available under Proteintech Group brand and is not available to purchase from any other manufacturer.**

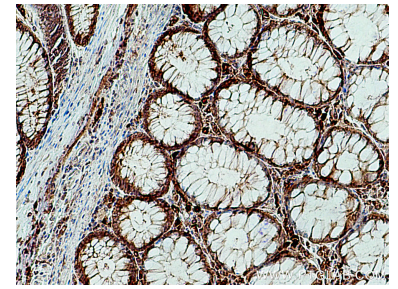
## Selected Validation Data



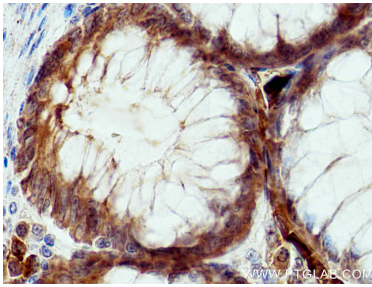
COLO 320 cells lysates were subjected to SDS PAGE followed by western blot with 16552-1-AP (SMPDL3B antibody) at dilution of 1:1500 incubated at room temperature for 1.5 hours.



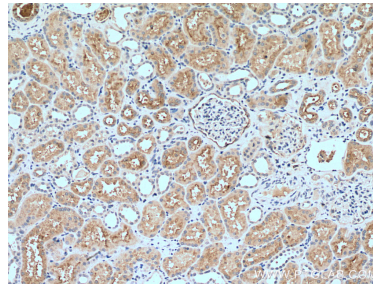
Various lysates were subjected to SDS PAGE followed by western blot with 16552-1-AP (SMPDL3B antibody) at dilution of 1:1000 incubated at room temperature for 1.5 hours.



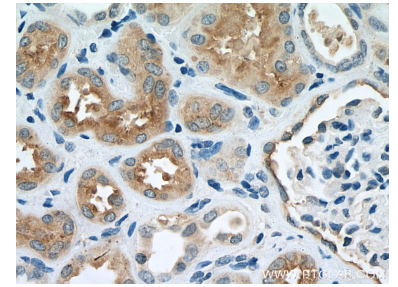
Immunohistochemical analysis of paraffin-embedded human colon cancer tissue slide using 16552-1-AP (SMPDL3B antibody) at dilution of 1:200 (under 10x lens). Heat mediated antigen retrieval with Tris-EDTA buffer (pH 9.0).



Immunohistochemical analysis of paraffin-embedded human colon cancer tissue slide using 16552-1-AP (SMPDL3B antibody) at dilution of 1:200 (under 40x lens). Heat mediated antigen retrieval with Tris-EDTA buffer (pH 9.0).



Immunohistochemical analysis of paraffin-embedded human kidney tissue slide using 16552-1-AP (SMPDL3B antibody) at dilution of 1:500 (under 10x lens). Heat mediated antigen retrieval with Tris-EDTA buffer (pH 9.0).



Immunohistochemical analysis of paraffin-embedded human kidney tissue slide using 16552-1-AP (SMPDL3B antibody) at dilution of 1:500 (under 40x lens). Heat mediated antigen retrieval with Tris-EDTA buffer (pH 9.0).