

For Research Use Only

# CTHRC1 Polyclonal antibody, PBS Only

Catalog Number: 16534-1-PBS

Featured Product



## Basic Information

**Catalog Number:**

16534-1-PBS

**Source:**

Rabbit

**Isotype:**

IgG

**Immunogen Catalog Number:**

AG9812

**GenBank Accession Number:**

BC014245

**GeneID (NCBI):**

115908

**UNIPROT ID:**

Q96CG8

**Full Name:**

collagen triple helix repeat containing 1

**Calculated MW:**

243 aa, 26 kDa

**Observed MW:**

25-30 kDa

**Purification Method:**

Antigen affinity purification

## Applications

**Tested Applications:**

WB, IF/ICC, FC (Intra), IP, Indirect ELISA

**Species Specificity:**

human, mouse, rat

## Background Information

Collagen triple helix repeat-containing protein 1 (CTHRC1), also known as protein NMTC1, is a glycosylated secreted protein. CTHRC1 was identified as a novel molecular in injured and diseased arteries where it may contribute to vascular remodeling by limiting collagen matrix deposition and promoting cell migration (PMID: 15618538). It has been reported that CTHRC1 is a positive regulator of osteoblastic bone formation (PMID: 18779865). Besides, studies reveal that CTHRC1 expression is implicated in various malignancies, including hepatocellular carcinoma, gastric carcinoma, colon cancer, and lung cancer (PMID: 23922981; 24504172; 24746208; 25139095).

## Storage

**Storage:**

Store at -80°C.

The product is shipped with ice packs. Upon receipt, store it immediately at -80°C

**Storage Buffer:**

PBS only, pH7.3

For technical support and original validation data for this product please contact:

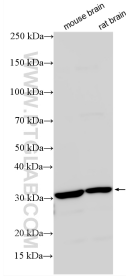
T: 4006900926

E: [Proteintech-CN@ptglab.com](mailto:Proteintech-CN@ptglab.com)

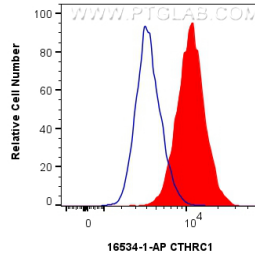
W: [ptgcn.com](http://ptgcn.com)

This product is exclusively available under Proteintech Group brand and is not available to purchase from any other manufacturer.

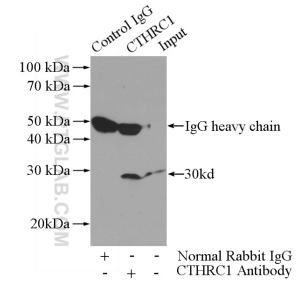
## Selected Validation Data



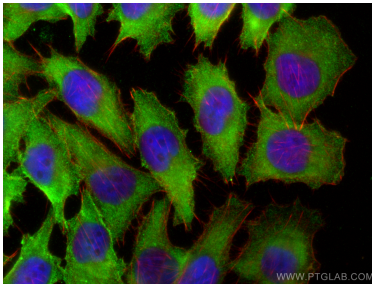
Various lysates were subjected to SDS PAGE followed by western blot with 16534-1-AP (CTHRC1 antibody) at dilution of 1:8000 incubated at room temperature for 1.5 hours. This data was developed using the same antibody clone with 16534-1-PBS in a different storage buffer formulation.



$1 \times 10^6$  A375 cells were intracellularly stained with 0.13  $\mu$ g CTHRC1 Polyclonal antibody (16534-1-AP) and CoraLite<sup>®</sup>488-Conjugated Goat Anti-Rabbit IgG(H+L) (SA00013-2)(red), or 0.13  $\mu$ g Isotype Control (blue). Cells were fixed with 4% PFA and permeabilized with Flow Cytometry Perm Buffer. This data was developed using the same antibody clone with 16534-1-PBS in a different storage buffer formulation.



IP result of anti-CTHRC1 (IP:16534-1-AP, 3 $\mu$ g; Detection:16534-1-AP 1:500) with A375 cells lysate 3600 $\mu$ g. This data was developed using the same antibody clone with 16534-1-PBS in a different storage buffer formulation.



Immunofluorescent analysis of (-20°C Ethanol) fixed A375 cells using CTHRC1 antibody (16534-1-AP) at dilution of 1:200 and CoraLite<sup>®</sup>488-Conjugated AffiniPure Goat Anti-Rabbit IgG(H+L) (SA00013-2), CL594-Phalloidin (red). This data was developed using the same antibody clone with 16534-1-PBS in a different storage buffer formulation.