

For Research Use Only

NGDN Polyclonal antibody

Catalog Number: 16524-1-AP **1 Publications**



Basic Information

Catalog Number: 16524-1-AP	GenBank Accession Number: BC030817	Purification Method: Antigen affinity purification
Size: 300 µg/ml	GeneID (NCBI): 25983	Recommended Dilutions: WB 1:500-1:1000 IHC 1:20-1:200 IF 1:20-1:200
Source: Rabbit	UNIPROT ID: Q8NEJ9	
Isotype: IgG	Full Name: neuroguidin, EIF4E binding protein	
Immunogen Catalog Number: AG9763	Calculated MW: 315 aa, 36 kDa	
	Observed MW: 36 kDa	

Applications

Tested Applications:
IF/ICC, IHC, WB, ELISA

Cited Applications:
WB

Species Specificity:
human, mouse, rat

Note-IHC: suggested antigen retrieval with TE buffer pH 9.0; (*) Alternatively, antigen retrieval may be performed with citrate buffer pH 6.0

Positive Controls:

WB: human cerebellum tissue, mouse brain tissue, mouse testis tissue

IHC: human epididymis tissue, human heart tissue, human kidney tissue, human liver tissue, human placenta tissue

IF: HeLa cells,

Background Information

Notable Publications

Author	Pubmed ID	Journal	Application
Carlos Gorbea	28976967	Nature	WB

Storage

Storage:
Store at -20°C. Stable for one year after shipment.
Storage Buffer:
PBS with 0.02% sodium azide and 50% glycerol pH 7.3.
Aliquoting is unnecessary for -20°C storage

For technical support and original validation data for this product please contact:

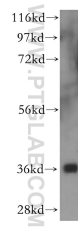
T: 4006900926

E: Proteintech-CN@ptglab.com

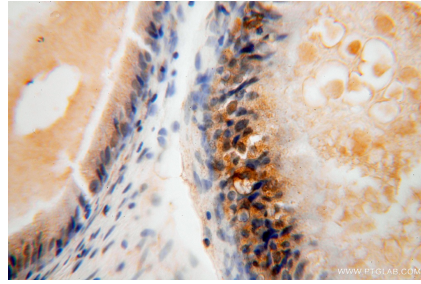
W: ptgcn.com

This product is exclusively available under Proteintech Group brand and is not available to purchase from any other manufacturer.

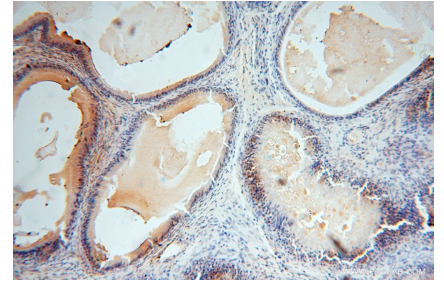
Selected Validation Data



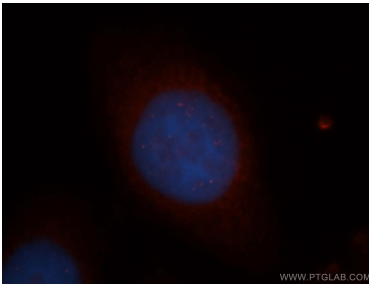
human cerebellum tissue were subjected to SDS PAGE followed by western blot with 16524-1-AP (NGDN antibody) at dilution of 1:500 incubated at room temperature for 1.5 hours.



Immunohistochemical analysis of paraffin-embedded human epididymis using 16524-1-AP (NGDN antibody) at dilution of 1:50 (under 40x lens).



Immunohistochemical analysis of paraffin-embedded human epididymis using 16524-1-AP (NGDN antibody) at dilution of 1:50 (under 10x lens).



Immunofluorescent analysis of HeLa cells, using NGDN antibody 16524-1-AP at 1:50 dilution and Rhodamine-labeled goat anti-rabbit IgG (red). Blue pseudocolor = DAPI (fluorescent DNA dye).