

For Research Use Only

RRP15 Polyclonal antibody

Catalog Number: 16523-1-AP

Featured Product



Basic Information

Catalog Number:

16523-1-AP

Size:

300 µg/ml

Source:

Rabbit

Isotype:

IgG

Immunogen Catalog Number:

AG9759

GenBank Accession Number:

BC020641

GeneID (NCBI):

51018

UNIPROT ID:

Q9Y3B9

Full Name:

ribosomal RNA processing 15
homolog (S. cerevisiae)

Calculated MW:

282 aa, 31 kDa

Observed MW:

31-40 kDa

Purification Method:

Antigen affinity purification

Recommended Dilutions:

WB 1:1000-1:4000

Applications

Tested Applications:

WB, ELISA

Species Specificity:

human, mouse, rat

Positive Controls:

WB : HeLa cells, HEK-293 cells, A549 cells

Background Information

Storage

Storage:

Store at -20°C. Stable for one year after shipment.

Storage Buffer:

PBS with 0.02% sodium azide and 50% glycerol pH 7.3.

Aliquoting is unnecessary for -20°C storage

For technical support and original validation data for this product please contact:

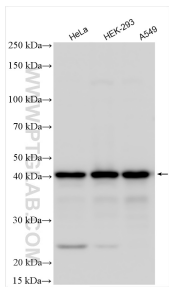
T: 4006900926

E: Proteintech-CN@ptglab.com

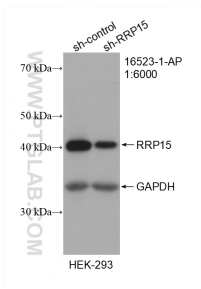
W: ptgcn.com

This product is exclusively available under Proteintech Group brand and is not available to purchase from any other manufacturer.

Selected Validation Data



Various lysates were subjected to SDS PAGE followed by western blot with 16523-1-AP (RRP15 antibody) at dilution of 1:2000 incubated at room temperature for 1.5 hours.



WB result of RRP15 antibody (16523-1-AP; 1:6000; incubated at room temperature for 1.5 hours) with sh-Control and sh-RRP15 transfected HEK-293 cells.