

For Research Use Only

# GLIPR2 Polyclonal antibody

Catalog Number: 16508-1-AP



## Basic Information

<b>Catalog Number:</b> 16508-1-AP	<b>GenBank Accession Number:</b> BC017918	<b>Purification Method:</b> Antigen affinity purification
<b>Concentration:</b> 350 ug/ml	<b>GeneID (NCBI):</b> 152007	<b>Recommended Dilutions:</b> WB 1:500-1:1000
<b>Source:</b> Rabbit	<b>UNIPROT ID:</b> Q9H4G4	<b>IHC 1:50-1:500</b>
<b>Isotype:</b> IgG	<b>Full Name:</b> GLI pathogenesis-related 2	<b>IF/ICC 1:50-1:500</b>
<b>Immunogen Catalog Number:</b> AG9725	<b>Calculated MW:</b> 153aa, 17 kDa; 90aa, 10 kDa	
	<b>Observed MW:</b> 17 kDa	

## Applications

<b>Tested Applications:</b> WB, IHC, IF/ICC, ELISA	<b>Positive Controls:</b>
<b>Species Specificity:</b> human	<b>WB :</b> human milk,
<b>Note-IHC:</b> suggested antigen retrieval with <b>TE buffer pH 9.0; (*)</b> Alternatively, antigen retrieval may be performed with <b>citrate buffer pH 6.0</b>	<b>IHC :</b> human lung tissue,
	<b>IF/ICC :</b> A431 cells,

## Background Information

Golgi-associated plant pathogenesis-related protein 1 (GLIPR2, also known as C9orf19 and GAPR1) is a multifunctional protein with dual engagement in normal cellular processes and the intricacies of cancer biology. GLIPR2 has also been associated with a spectrum of cellular functions encompassing the regulation of autophagy (PMID: 12137952; 18824526). It has been reported that GLIPR2 is a newly identified negative regulator of autophagy that inhibits the class III phosphatidylinositol 3-kinase complex I (PtdIns3K-C1) complex activity (PMID: 33222586).

## Storage

**Storage:**  
Store at -20°C. Stable for one year after shipment.  
**Storage Buffer:**  
PBS with 0.02% sodium azide and 50% glycerol pH 7.3.  
**Aliquoting is unnecessary for -20°C storage**

For technical support and original validation data for this product please contact:

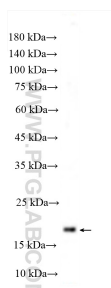
T: 4006900926

E: [Proteintech-CN@ptglab.com](mailto:Proteintech-CN@ptglab.com)

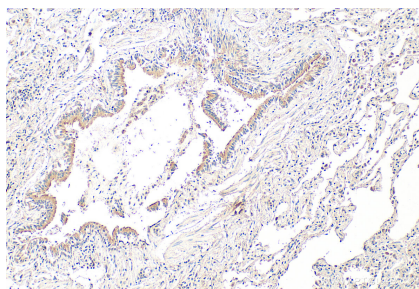
W: [ptgcn.com](http://ptgcn.com)

This product is exclusively available under Proteintech Group brand and is not available to purchase from any other manufacturer.

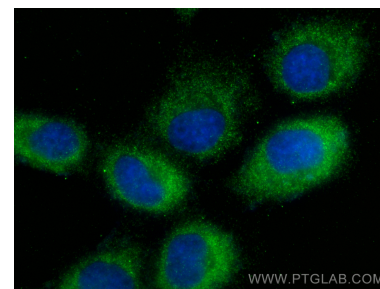
## Selected Validation Data



human milk were subjected to SDS PAGE followed by western blot with 16508-1-AP (GLIPR2 antibody) at dilution of 1:600 incubated at room temperature for 1.5 hours.



Immunohistochemical analysis of paraffin-embedded human lung tissue slide using 16508-1-AP (GLIPR2 antibody) at dilution of 1:200 (under 10x lens). Heat mediated antigen retrieval with Tris-EDTA buffer (pH 9.0).



Immunofluorescent analysis of (-20°C Methanol) fixed A431 cells using GLIPR2 antibody (16508-1-AP) at dilution of 1:200 and CoraLite®488-Conjugated Goat Anti-Rabbit IgG(H+L) (SA00013-2).