

For Research Use Only

FBXL8 Polyclonal antibody

Catalog Number: 16505-1-AP



Basic Information

Catalog Number:

16505-1-AP

Concentration:

390 µg/ml

Source:

Rabbit

Isotype:

IgG

Immunogen Catalog Number:

AG9685

GenBank Accession Number:

BC014414

GeneID (NCBI):

55336

UNIPROT ID:

Q96CDO

Full Name:

F-box and leucine-rich repeat protein

8

Calculated MW:

374 aa, 41 kDa

Purification Method:

Antigen affinity purification

Recommended Dilutions:

IHC 1:20-1:200

Applications

Tested Applications:

IHC, ELISA

Species Specificity:

human, mouse, rat

Note-IHC: suggested antigen retrieval with TE buffer pH 9.0; (*) Alternatively, antigen retrieval may be performed with citrate buffer pH 6.0

Positive Controls:

IHC : human placenta tissue, human kidney tissue, human lung tissue, human ovary tissue, human spleen tissue, human testis tissue

Background Information

FBXL8(F-box/LRR-repeat protein 8) is also named as FBL8 and belongs to the F-box protein family, which are characterized by an approximately 40-amino acid F-box motif. The human FBXL8 protein contains an N-terminal F box, followed by 8 leucine-rich repeats. It interacts with SKP1 and CUL1 directly.

Storage

Storage:

Store at -20°C. Stable for one year after shipment.

Storage Buffer:

PBS with 0.02% sodium azide and 50% glycerol, pH7.3

Aliquoting is unnecessary for -20°C storage

For technical support and original validation data for this product please contact:

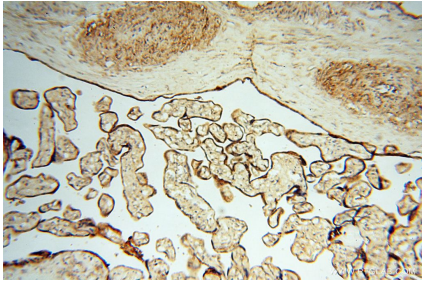
T: 4006900926

E: Proteintech-CN@ptglab.com

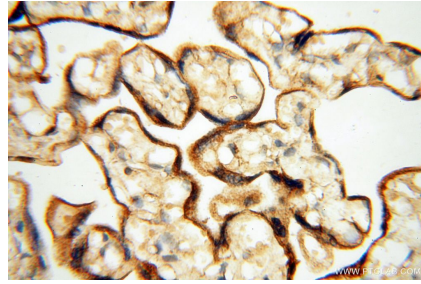
W: ptgcn.com

This product is exclusively available under Proteintech Group brand and is not available to purchase from any other manufacturer.

Selected Validation Data



Immunohistochemical analysis of paraffin-embedded human placenta using 16505-1-AP (FBXL8 antibody) at dilution of 1:50 (under 10x lens).



Immunohistochemical analysis of paraffin-embedded human placenta using 16505-1-AP (FBXL8 antibody) at dilution of 1:50 (under 40x lens).