

For Research Use Only

# RPL31 Polyclonal antibody

Catalog Number: 16497-1-AP

Featured Product

3 Publications



## Basic Information

### Catalog Number:

16497-1-AP

### Size:

240 µg/ml

### Source:

Rabbit

### Isotype:

IgG

### Immunogen Catalog Number:

AG9648

### GenBank Accession Number:

BC017343

### GeneID (NCBI):

6160

### UNIPROT ID:

P62899

### Full Name:

ribosomal protein L31

### Calculated MW:

125 aa, 14 kDa

### Observed MW:

14 kDa

### Purification Method:

Antigen affinity purification

### Recommended Dilutions:

WB 1:500-1:1000

IF/ICC 1:50-1:500

## Applications

### Tested Applications:

WB, IF/ICC, ELISA

### Cited Applications:

WB, IF

### Species Specificity:

human, mouse, rat

### Cited Species:

human, mouse

### Positive Controls:

WB : HepG2 cells, mouse liver tissue, NIH/3T3 cells

IF/ICC : HepG2 cells,

## Background Information

The mammalian ribosome comprises 79 ribosomal proteins and four rRNAs, which combine in equimolar ratios to form the small (40S) and large (60S) subunits. Ribosome proteins are a direct and critical target of the PI3K pathway in promoting growth.[PMID:15289434]. Ribosomal protein L31 gene is a component of the 60S large ribosomal subunit encoded by RPL31 gene, while ribosomal protein L31 (RPL31) is an important constituent of peptidyltransferase center [PMID:22714919].

## Notable Publications

Author	Pubmed ID	Journal	Application
Long Jiang	28502657	Curr Biol	WB
Rui Guo	38341271	J Med Genet	IF
Magdalena Wolczyk	37123244	iScience	WB

## Storage

### Storage:

Store at -20°C. Stable for one year after shipment.

### Storage Buffer:

PBS with 0.02% sodium azide and 50% glycerol pH 7.3.

Aliquoting is unnecessary for -20°C storage

For technical support and original validation data for this product please contact:

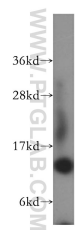
T: 4006900926

E: [Proteintech-CN@ptglab.com](mailto:Proteintech-CN@ptglab.com)

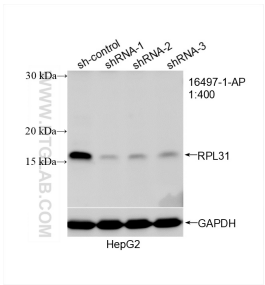
W: [ptgcn.com](http://ptgcn.com)

This product is exclusively available under Proteintech Group brand and is not available to purchase from any other manufacturer.

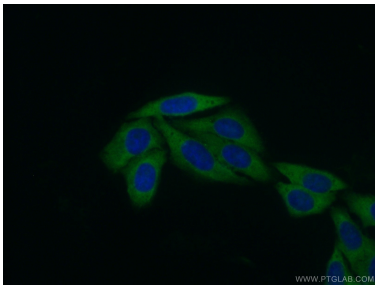
Selected Validation Data



HepG2 cells were subjected to SDS PAGE followed by western blot with 16497-1-AP (RPL31 antibody) at dilution of 1:300 incubated at room temperature for 1.5 hours.



WB result of RPL31 antibody (16497-1-AP; 1:400; incubated at room temperature for 1.5 hours) with sh-Control and sh-RPL31 transfected HepG2 cells.



Immunofluorescent analysis of (10% Formaldehyde) fixed HepG2 cells using 16497-1-AP (RPL31 antibody) at dilution of 1:50 and Alexa Fluor 488-conjugated Goat Anti-Rabbit IgG(H+L).