

For Research Use Only

# GPR137B Polyclonal antibody

Catalog Number: 16496-1-AP

2 Publications



## Basic Information

Catalog Number:

16496-1-AP

Concentration:

220 ug/ml

Source:

Rabbit

Isotype:

IgG

Immunogen Catalog Number:

AG9633

GenBank Accession Number:

BC012100

GeneID (NCBI):

7107

UNIPROT ID:

O60478

Full Name:

G protein-coupled receptor 137B

Calculated MW:

399 aa, 46 kDa

Observed MW:

48-50 kDa

Purification Method:

Antigen affinity purification

Recommended Dilutions:

WB 1:100-1:600

IHC 1:50-1:500

## Applications

Tested Applications:

WB, IHC, ELISA

Cited Applications:

WB, IF

Species Specificity:

human

Cited Species:

human, mouse

**Note-IHC: suggested antigen retrieval with TE buffer pH 9.0; (\*) Alternatively, antigen retrieval may be performed with citrate buffer pH 6.0**

Positive Controls:

WB : human heart tissue,

IHC : human kidney tissue, human liver cancer tissue

## Background Information

### Notable Publications

Author	Pubmed ID	Journal	Application
Yunfei Hu	32482387	Biochem Biophys Res Commun	WB
K Urso	31173907	Bone	WB,IF

## Storage

Storage:

Store at -20°C. Stable for one year after shipment.

Storage Buffer:

PBS with 0.02% sodium azide and 50% glycerol pH 7.3.

Aliquoting is unnecessary for -20°C storage

For technical support and original validation data for this product please contact:

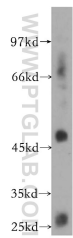
T: 4006900926

E: [Proteintech-CN@ptglab.com](mailto:Proteintech-CN@ptglab.com)

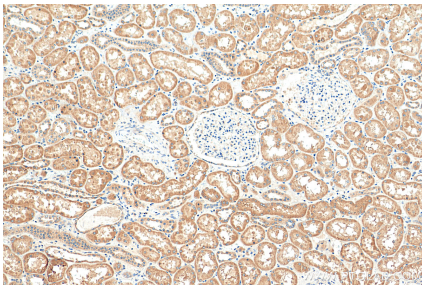
W: [ptgcn.com](http://ptgcn.com)

This product is exclusively available under Proteintech Group brand and is not available to purchase from any other manufacturer.

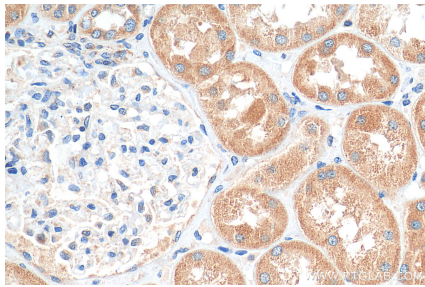
## Selected Validation Data



human heart tissue were subjected to SDS PAGE followed by western blot with 16496-1-AP (GPR137B antibody) at dilution of 1:300 incubated at room temperature for 1.5 hours.



Immunohistochemical analysis of paraffin-embedded human kidney tissue slide using 16496-1-AP (GPR137B antibody) at dilution of 1:200 (under 10x lens). Heat mediated antigen retrieval with Tris-EDTA buffer (pH 9.0).



Immunohistochemical analysis of paraffin-embedded human kidney tissue slide using 16496-1-AP (GPR137B antibody) at dilution of 1:200 (under 40x lens). Heat mediated antigen retrieval with Tris-EDTA buffer (pH 9.0).