

For Research Use Only

# Moesin Polyclonal antibody

Catalog Number: 16495-1-AP

Featured Product

6 Publications



## Basic Information

### Catalog Number:

16495-1-AP

### Size:

500 ug/ml

### Source:

Rabbit

### Isotype:

IgG

### Immunogen Catalog Number:

AG9623

### GenBank Accession Number:

BC017293

### GeneID (NCBI):

4478

### UNIPROT ID:

P26038

### Full Name:

moesin

### Calculated MW:

577 aa, 68 kDa

### Observed MW:

68-70 kDa

### Purification Method:

Antigen affinity purification

### Recommended Dilutions:

WB 1:5000-1:50000

IHC 1:200-1:800

IF/ICC 1:50-1:500

## Applications

### Tested Applications:

WB, IHC, IF/ICC, FC (Intra), ELISA

### Cited Applications:

WB, IHC, IF, IP

### Species Specificity:

human, mouse, rat

### Cited Species:

human, mouse

**Note-IHC: suggested antigen retrieval with TE buffer pH 9.0; (\*) Alternatively, antigen retrieval may be performed with citrate buffer pH 6.0**

### Positive Controls:

**WB:** BxPC-3 cells, HeLa cells, Jurkat cells, NIH/3T3 cells, Raji cells, SGC-7901 cells, C6 cells

**IHC:** human placenta tissue, human skin tissue, human ovary tissue, mouse kidney tissue, human colon

**IF/ICC:** HepG2 cells,

## Background Information

Moesin belongs to the ezrin-radixin-moesin (ERM) family of proteins which act as cross-linkers between membrane and actin cytoskeleton. ERM proteins provide structural links to strengthen the cell cortex and facilitate several key cellular processes, including membrane dynamics, substrate adhesion, cell survival, cell adhesion, and motility. The function of ERM proteins is highly reliant on phosphorylation induced conformational changes in response to growth factor, chemokine, and antigen stimulation. This antibody may cross-react with ezrin or radixin with molecular weights around 68-70 kDa.

## Notable Publications

Author	Pubmed ID	Journal	Application
Krishnendu Khan	33086476	Int J Mol Sci	WB
Mark Pines	28082118	Am J Pathol	IF
Maidinaimu Abudula	35557941	Front Cell Dev Biol	WB

## Storage

### Storage:

Store at -20°C. Stable for one year after shipment.

### Storage Buffer:

PBS with 0.02% sodium azide and 50% glycerol pH 7.3.

Aliquoting is unnecessary for -20°C storage

For technical support and original validation data for this product please contact:

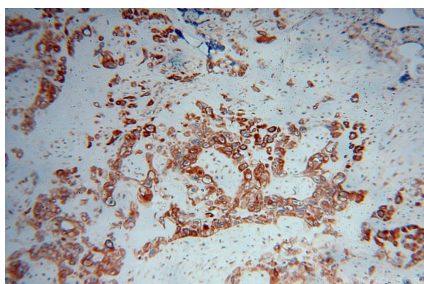
T: 4006900926

E: [Proteintech-CN@ptglab.com](mailto:Proteintech-CN@ptglab.com)

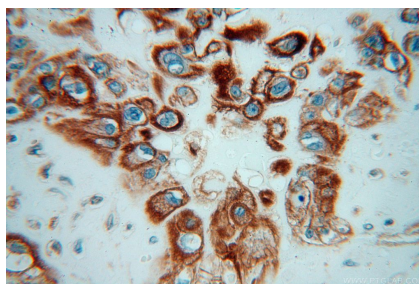
W: [ptgcn.com](http://ptgcn.com)

**This product is exclusively available under Proteintech Group brand and is not available to purchase from any other manufacturer.**

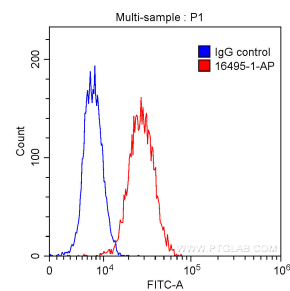
## Selected Validation Data



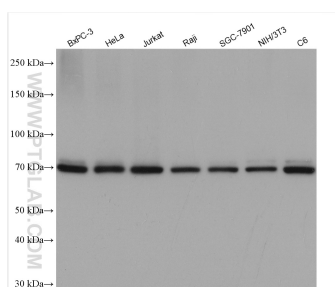
Immunohistochemical analysis of paraffin-embedded human placenta using 16495-1-AP (Moesin antibody) at dilution of 1:50 (under 10x lens).



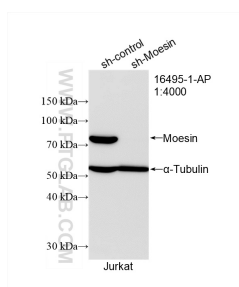
Immunohistochemical analysis of paraffin-embedded human placenta using 16495-1-AP (Moesin antibody) at dilution of 1:50 (under 40x lens).



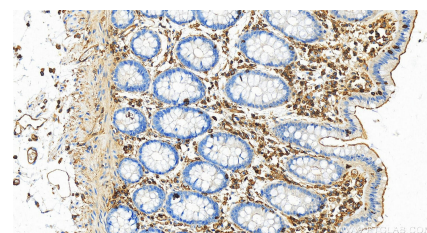
1X10<sup>6</sup> HepG2 cells were intracellularly stained with 0.20ug Anti-Human Moesin (16495-1-AP) (red) or 0.20 ug control antibody (blue) and CoraLite488-Conjugated AffiniPure Goat Anti-Rabbit IgG(H+L) with dilution 1:1000. Fixed with 90% MeOH.



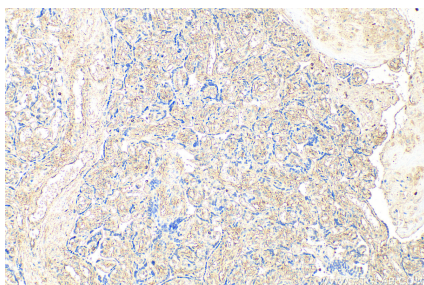
Various lysates were subjected to SDS PAGE followed by western blot with 16495-1-AP (Moesin antibody) at dilution of 1:10000 incubated at room temperature for 1.5 hours.



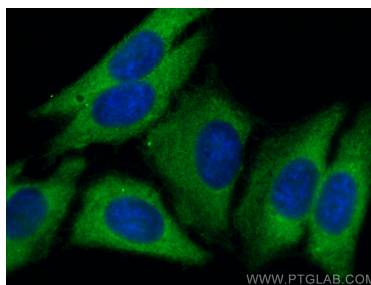
WB result of Moesin antibody (16495-1-AP; 1:4000; incubated at room temperature for 1.5 hours) with sh-Control and sh-Moesin transfected Jurkat cells.



Immunohistochemical analysis of paraffin-embedded human colon slide using 16495-1-AP (Moesin antibody) at dilution of 1:2000 (under 20x lens). Heat mediated antigen retrieval with Tris-EDTA buffer (pH 9.0).



Immunohistochemical analysis of paraffin-embedded human placenta tissue slide using 16495-1-AP (Moesin antibody) at dilution of 1:400 (under 10x lens). Heat mediated antigen retrieval with Tris-EDTA buffer (pH 9.0).



Immunofluorescent analysis of (-20°C Methanol) fixed HepG2 cells using Moesin antibody (16495-1-AP) at dilution of 1:200 and CoraLite®488-Conjugated AffiniPure Goat Anti-Rabbit IgG(H+L).