

For Research Use Only

MRPL2 Polyclonal antibody

Catalog Number: 16492-1-AP

2 Publications



Basic Information

Catalog Number:

16492-1-AP

Size:

600 µg/ml

Source:

Rabbit

Isotype:

IgG

Immunogen Catalog Number:

AG9618

GenBank Accession Number:

BC020212

GeneID (NCBI):

51069

UNIPROT ID:

Q5T653

Full Name:

mitochondrial ribosomal protein L2

Calculated MW:

305 aa, 33 kDa

Observed MW:

33 kDa

Purification Method:

Antigen affinity purification

Recommended Dilutions:

WB 1:500-1:2000

Applications

Tested Applications:

WB, ELISA

Cited Applications:

WB

Species Specificity:

human, mouse, rat

Cited Species:

human, mouse

Positive Controls:

WB : HeLa cells, HepG2 cells

Background Information

Notable Publications

Author	Pubmed ID	Journal	Application
Qianxing Zou	34825148	iScience	WB
Liang Wang	37971521	Cell Mol Life Sci	WB

Storage

Storage:

Store at -20°C. Stable for one year after shipment.

Storage Buffer:

PBS with 0.02% sodium azide and 50% glycerol pH 7.3.

Aliquoting is unnecessary for -20°C storage

For technical support and original validation data for this product please contact:

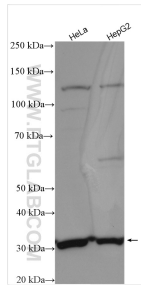
T: 4006900926

E: Proteintech-CN@ptglab.com

W: ptgcn.com

This product is exclusively available under Proteintech Group brand and is not available to purchase from any other manufacturer.

Selected Validation Data



Various lysates were subjected to SDS PAGE followed by western blot with 16492-1-AP (MRPL2 antibody) at dilution of 1:1000 incubated at room temperature for 1.5 hours.