

RPS12 Polyclonal antibody

Catalog Number: 16490-1-AP

Featured Product

11 Publications

Basic Information

Catalog Number:

16490-1-AP

Size:

350 µg/ml

Source:

Rabbit

Isotype:

IgG

Immunogen Catalog Number:

AG9615

GenBank Accession Number:

BC017321

GeneID (NCBI):

6206

UNIPROT ID:

P25398

Full Name:

ribosomal protein S12

Calculated MW:

132 aa, 15 kDa

Observed MW:

15 kDa

Purification Method:

Antigen affinity purification

Recommended Dilutions:

WB 1:1000-1:4000

IP 0.5-4.0 µg for 1.0-3.0 mg of total protein lysate

IHC 1:20-1:200

IF 1:10-1:100

Applications

Tested Applications:

IF/ICC, IHC, IP, WB, ELISA

Cited Applications:

WB, IF, IHC

Species Specificity:

human, mouse, rat

Cited Species:

human, mouse, drosophila

Note-IHC: suggested antigen retrieval with TE buffer pH 9.0; (*) Alternatively, antigen retrieval may be performed with citrate buffer pH 6.0

Positive Controls:

WB : NIH/3T3 cells, HeLa cells, MCF-7 cells, HepG2 cells

IP : HeLa cells,

IHC : human colon cancer tissue,

IF : HepG2 cells,

Background Information

RPS12 (ribosomal protein S12) is a plastid ribosomal protein which is a part of the 30S ribosomal subunit. Together with S4 and S5 plays an important role in translational accuracy. This antibody specifically recognizes the 15kd RPS12 protein.

Notable Publications

Author	Pubmed ID	Journal	Application
Dhaval Varshney	34815422	Sci Rep	WB
Kevin F Chau	29745900	Elife	IHC
Raines Anna MAM	23760953	Development	IHC

Storage

Storage:

Store at -20°C. Stable for one year after shipment.

Storage Buffer:

PBS with 0.02% sodium azide and 50% glycerol pH 7.3.

Aliquoting is unnecessary for -20°C storage

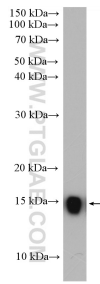
For technical support and original validation data for this product please contact:

T: 4006900926

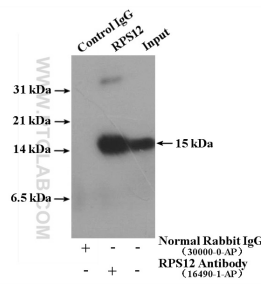
E: Proteintech-CN@ptglab.comW: ptgcn.com

This product is exclusively available under Proteintech Group brand and is not available to purchase from any other manufacturer.

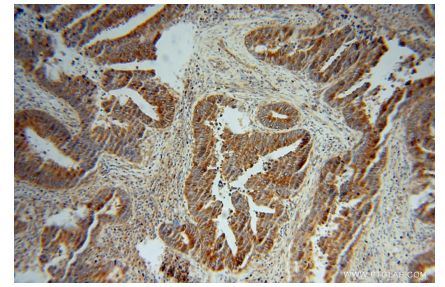
Selected Validation Data



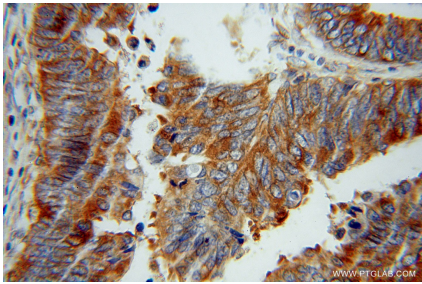
NIH/3T3 cells were subjected to SDS PAGE followed by western blot with 16490-1-AP (RPS12 antibody) at dilution of 1:2000 incubated at room temperature for 1.5 hours.



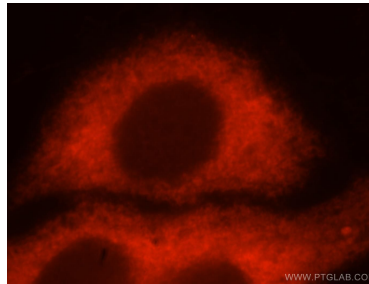
IP result of anti-RPS12 (IP:16490-1-AP, 4ug; Detection:16490-1-AP 1:1000) with HeLa cells lysate 2920 ug.



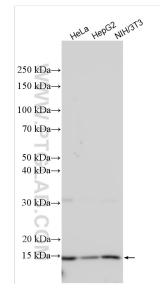
Immunohistochemical analysis of paraffin-embedded human colon cancer using 16490-1-AP (RPS12 antibody) at dilution of 1:50 (under 10x lens).



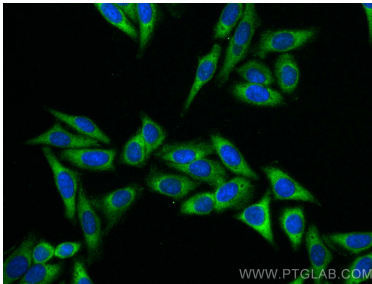
Immunohistochemical analysis of paraffin-embedded human colon cancer using 16490-1-AP (RPS12 antibody) at dilution of 1:50 (under 40x lens).



Immunofluorescent analysis of HepG2 cells, using RPS12 antibody 16490-1-AP at 1:25 dilution and Rhodamine-labeled goat anti-rabbit IgG (red).



Various lysates were subjected to SDS PAGE followed by western blot with 16490-1-AP (RPS12 antibody) at dilution of 1:2000 incubated at room temperature for 1.5 hours.



Immunofluorescent analysis of (-20°C Methanol) fixed HepG2 cells using RPS12 antibody (16490-1-AP) at dilution of 1:400 and CoraLite®488-Conjugated AffiniPure Goat Anti-Rabbit IgG(H+L).