

For Research Use Only

# EDC3 Polyclonal antibody

Catalog Number: 16486-1-AP

5 Publications



## Basic Information

Catalog Number:

16486-1-AP

Size:

350 µg/ml

Source:

Rabbit

Isotype:

IgG

Immunogen Catalog Number:

AG9608

GenBank Accession Number:

BC021271

GeneID (NCBI):

80153

UNIPROT ID:

Q96F86

Full Name:

enhancer of mRNA decapping 3 homolog (S. cerevisiae)

Calculated MW:

508 aa, 56 kDa

Observed MW:

56 kDa

Purification Method:

Antigen affinity purification

Recommended Dilutions:

WB 1:1000-1:6000

IP 0.5-4.0 µg for 1.0-3.0 mg of total protein lysate

IHC 1:50-1:500

IF/ICC 1:200-1:800

## Applications

Tested Applications:

WB, IHC, IF/ICC, IP, ELISA

Cited Applications:

WB, IF

Species Specificity:

human, mouse, rat

Cited Species:

human, mouse, rat

**Note-IHC: suggested antigen retrieval with TE buffer pH 9.0; (\*) Alternatively, antigen retrieval may be performed with citrate buffer pH 6.0**

Positive Controls:

WB : HEK-293T cells, MCF-7 cells, HeLa cells

IP : HeLa cells,

IHC : human kidney tissue, human heart tissue, human placenta tissue, human skin tissue, human liver tissue, human spleen tissue

IF/ICC : HeLa cells,

## Background Information

### Notable Publications

Author	Pubmed ID	Journal	Application
Eva Riechert	33979607	Cell Rep	WB
Nina Ripin	38536035	J Cell Biol	IF, WB
Liang Fang	38190710	Cancer Res	IF

## Storage

Storage:

Store at -20°C. Stable for one year after shipment.

Storage Buffer:

PBS with 0.02% sodium azide and 50% glycerol pH 7.3.

Aliquoting is unnecessary for -20°C storage

For technical support and original validation data for this product please contact:

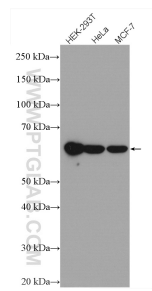
T: 4006900926

E: [Proteintech-CN@ptglab.com](mailto:Proteintech-CN@ptglab.com)

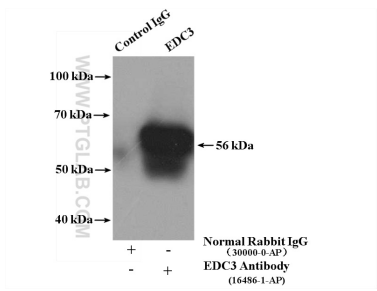
W: [ptgcn.com](http://ptgcn.com)

**This product is exclusively available under Proteintech Group brand and is not available to purchase from any other manufacturer.**

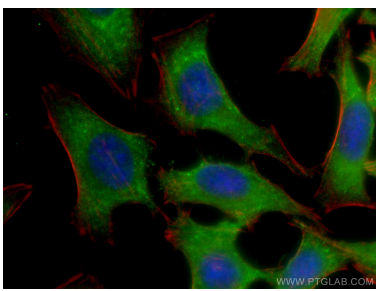
Selected Validation Data



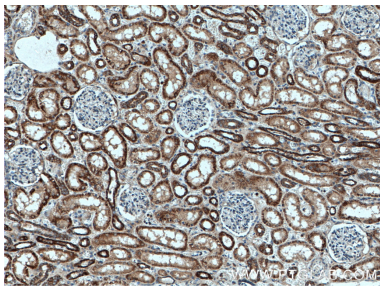
Various lysates were subjected to SDS PAGE followed by western blot with 16486-1-AP (EDC3 antibody) at dilution of 1:4000 incubated at room temperature for 1.5 hours.



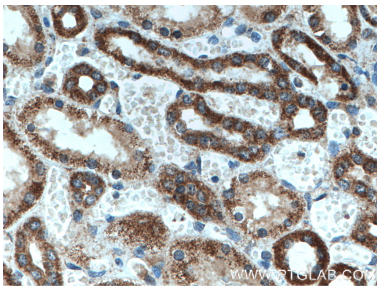
IP result of anti-EDC3 (IP:16486-1-AP, 4ug; Detection:16486-1-AP 1:500) with HeLa cells lysate 3200ug.



Immunofluorescent analysis of (-20°C Ethanol) fixed HeLa cells using EDC3 antibody (16486-1-AP) at dilution of 1:400 and CoraLite®488-Conjugated AffiniPure Goat Anti-Rabbit IgG(H+L), CL594-Phalloidin (red).



Immunohistochemical analysis of paraffin-embedded human kidney tissue slide using 16486-1-AP (EDC3 antibody) at dilution of 1:200 (under 10x lens. Heat mediated antigen retrieval with Tris-EDTA buffer (pH 9.0).



Immunohistochemical analysis of paraffin-embedded human kidney tissue slide using 16486-1-AP (EDC3 antibody) at dilution of 1:200 (under 40x lens. Heat mediated antigen retrieval with Tris-EDTA buffer (pH 9.0).