

For Research Use Only

ATP5I Polyclonal antibody

Catalog Number: 16483-1-AP

11 Publications



Basic Information

Catalog Number: 16483-1-AP	GenBank Accession Number: BC003679	Purification Method: Antigen affinity purification
Concentration: 550 µg/ml	GeneID (NCBI): 521	Recommended Dilutions: WB 1:500-1:2000
Source: Rabbit	UNIPROT ID: P56385	IHC 1:50-1:500
Isotype: IgG	Full Name: ATP synthase, H ⁺ transporting, mitochondrial F0 complex, subunit E	IF/ICC 1:50-1:500
Immunogen Catalog Number: AG9605	Calculated MW: 69 aa, 8 kDa	
	Observed MW: 8 kDa	

Applications

Tested Applications: WB, IHC, IF/ICC, ELISA	Positive Controls: WB : HepG2 cells, mouse liver tissue
Cited Applications: WB, IF	IHC : human liver cancer tissue,
Species Specificity: human, mouse, rat	IF/ICC : HeLa cells,
Cited Species: human, mouse, chicken	

Note-IHC: suggested antigen retrieval with TE buffer pH 9.0; (*) Alternatively, antigen retrieval may be performed with citrate buffer pH 6.0

Background Information

ATP5I(ATP synthase subunit e) is also named as ATP5K and belongs to the ATPase e subunit family. The ATP5I gene encodes the e subunit of the mitochondrial ATP synthase Fo complex. Mitochondrial membrane ATP synthase(F1F0 ATP synthase or Complex V) produces ATP from ADP in the presence of a proton gradient across the membrane which is generated by electron transport complexes of the respiratory chain. Antisense ATP5I in a human HCC cell line inhibited cell growth suggesting that ATP5I acts through the MAP kinase pathway(PMID:11939412).

Notable Publications

Author	Pubmed ID	Journal	Application
Christin A Albus	34681149	Biology (Basel)	IF
Víctor Llombart	27888142	J Proteomics	WB
Tetsuro Matsushashi	28579242	EBioMedicine	

Storage

Storage:
Store at -20°C. Stable for one year after shipment.
Storage Buffer:
PBS with 0.02% sodium azide and 50% glycerol, pH7.3
Aliquoting is unnecessary for -20°C storage

For technical support and original validation data for this product please contact:

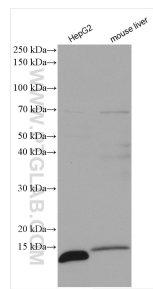
T: 4006900926

E: Proteintech-CN@ptglab.com

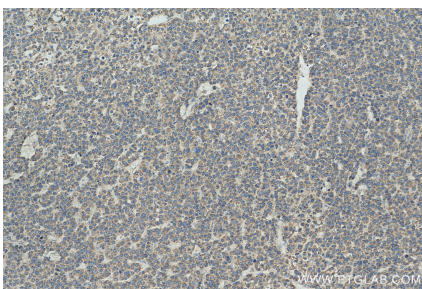
W: ptgcn.com

This product is exclusively available under Proteintech Group brand and is not available to purchase from any other manufacturer.

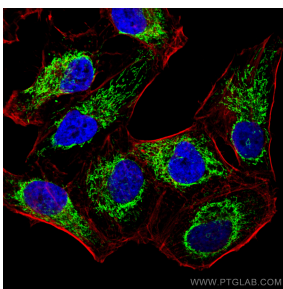
Selected Validation Data



Various lysates were subjected to SDS PAGE followed by western blot with 16483-1-AP (ATP5I antibody) at dilution of 1:1000 incubated at room temperature for 1.5 hours.



Immunohistochemical analysis of paraffin-embedded human liver cancer tissue slide using 16483-1-AP (ATP5I antibody) at dilution of 1:200 (under 10x lens). Heat mediated antigen retrieval with Tris-EDTA buffer (pH 9.0).



Immunofluorescent analysis of (4% PFA) fixed HeLa cells using ATP5I antibody (16483-1-AP) at dilution of 1:200 and Multi-rAb CoraLite® Plus 488-Goat Anti-Rabbit Recombinant Secondary Antibody (H+L) (RGAR002), CL594-Phalloidin (red).