

For Research Use Only

NDUFA4L2 Polyclonal antibody

Catalog Number: 16480-1-AP

Featured Product

28 Publications



Basic Information

Catalog Number:

16480-1-AP

Concentration:

300 µg/ml

Source:

Rabbit

Isotype:

IgG

Immunogen Catalog Number:

AG9600

GenBank Accession Number:

BC011910

GeneID (NCBI):

56901

UNIPROT ID:

Q9NRX3

Full Name:

NADH dehydrogenase (ubiquinone) 1
alpha subcomplex, 4-like 2

Calculated MW:

87 aa, 10 kDa

Observed MW:

10 kDa

Purification Method:

Antigen affinity purification

Recommended Dilutions:

WB 1:1000-1:6000

IP 0.5-4.0 µg for 1.0-3.0 mg of total
protein lysate

IHC 1:50-1:500

IF/ICC 1:200-1:800

Applications

Tested Applications:

WB, IHC, IF/ICC, IP, ELISA

Cited Applications:

WB, IHC, IF, IP, CoIP

Species Specificity:

human, mouse, rat

Cited Species:

human, mouse, rat

**Note-IHC: suggested antigen retrieval with
TE buffer pH 9.0; (*) Alternatively, antigen
retrieval may be performed with citrate
buffer pH 6.0**

Positive Controls:

WB : COLO 320 cells, HeLa cells, HUVEC cells, HepG2
cells, Jurkat cells, PC-3 cells

IP : HeLa cells,

IHC : human liver cancer tissue, human kidney tissue,
human liver tissue, mouse kidney tissue

IF/ICC : HeLa cells,

Background Information

NDUFA4L2(NADH dehydrogenase [ubiquinone] 1 alpha subcomplex subunit 4-like 2), also named as NUOMS, is a HIF-1α target gene that localizes to the mitochondria and belongs to the complex I NDUFA4 subunit family. It downregulates oxygen consumption and Complex I activity in hypoxia. NDUFA4L2 is involved in hypoxic adaptation by decreasing mitochondrial ROS production.

Notable Publications

Author	Pubmed ID	Journal	Application
Yue Zhang	36307669	J Bioenerg Biomembr	IHC
Zhengye Liu	34724256	FASEB J	WB, IF
Wen-Ning Xu	33330441	Front Cell Dev Biol	WB

Storage

Storage:

Store at -20°C. Stable for one year after shipment.

Storage Buffer:

PBS with 0.02% sodium azide and 50% glycerol, pH7.3

Aliquoting is unnecessary for -20°C storage

For technical support and original validation data for this product please contact:

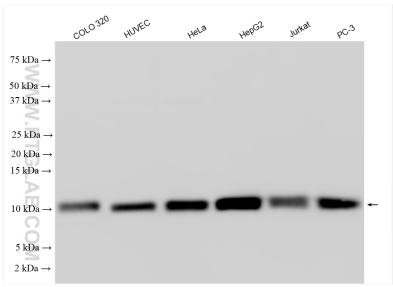
T: 4006900926

E: Proteintech-CN@ptglab.com

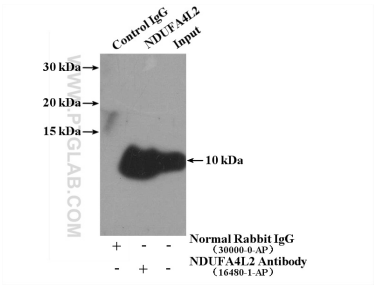
W: ptgcn.com

This product is exclusively available under Proteintech Group brand and is not available to purchase from any other manufacturer.

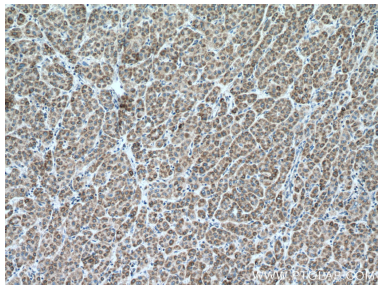
Selected Validation Data



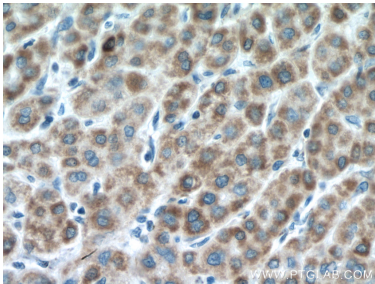
Various lysates were subjected to SDS PAGE followed by western blot with 16480-1-AP (NDUFA4L2 antibody) at dilution of 1:3000 incubated at room temperature for 1.5 hours.



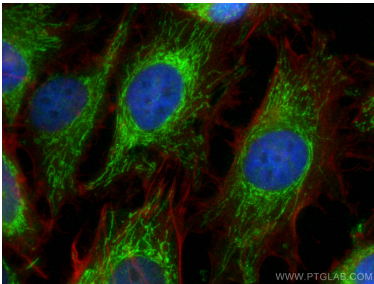
IP result of anti-NDUFA4L2 (IP:16480-1-AP, 4ug; Detection:16480-1-AP 1:500) with HeLa cells lysate 1200ug.



Immunohistochemical analysis of paraffin-embedded human liver cancer tissue slide using 16480-1-AP (NDUFA4L2 antibody) at dilution of 1:200 (under 10x lens. Heat mediated antigen retrieval with Tris-EDTA buffer (pH 9.0).



Immunohistochemical analysis of paraffin-embedded human liver cancer tissue slide using 16480-1-AP (NDUFA4L2 antibody) at dilution of 1:200 (under 40x lens. Heat mediated antigen retrieval with Tris-EDTA buffer (pH 9.0).



Immunofluorescent analysis of (4% PFA) fixed HeLa cells using NDUFA4L2 antibody (16480-1-AP) at dilution of 1:400 and CoraLite® 488-Conjugated Goat Anti-Rabbit IgG(H+L), CL594-Phalloidin (red).