

For Research Use Only

ADO Polyclonal antibody

Catalog Number: 16479-1-AP

Featured Product

1 Publications



Basic Information

Catalog Number:

16479-1-AP

Size:

260 µg/ml

Source:

Rabbit

Isotype:

IgG

Immunogen Catalog Number:

AG9598

GenBank Accession Number:

BC018660

GeneID (NCBI):

84890

UNIPROT ID:

Q965Z5

Full Name:

2-aminoethanethiol (cysteamine)

dioxygenase

Calculated MW:

270 aa, 30 kDa

Observed MW:

28 kDa-30 kDa

Purification Method:

Antigen affinity purification

Recommended Dilutions:

WB 1:500-1:1000

IHC 1:20-1:200

Applications

Tested Applications:

IHC, WB, ELISA

Cited Applications:

WB

Species Specificity:

human, mouse, rat

Cited Species:

human

Note-IHC: suggested antigen retrieval with TE buffer pH 9.0; (*) Alternatively, antigen retrieval may be performed with citrate buffer pH 6.0

Positive Controls:

WB : human brain tissue, mouse spleen tissue

IHC : human brain tissue,

Background Information

Notable Publications

Author	Pubmed ID	Journal	Application
Dachuan Shen	33483477	Cell Death Discov	WB

Storage

Storage:

Store at -20°C. Stable for one year after shipment.

Storage Buffer:

PBS with 0.02% sodium azide and 50% glycerol pH 7.3.

Aliquoting is unnecessary for -20°C storage

For technical support and original validation data for this product please contact:

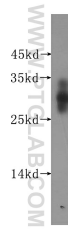
T: 4006900926

E: Proteintech-CN@ptglab.com

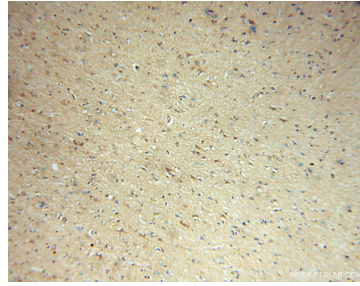
W: ptgcn.com

This product is exclusively available under Proteintech Group brand and is not available to purchase from any other manufacturer.

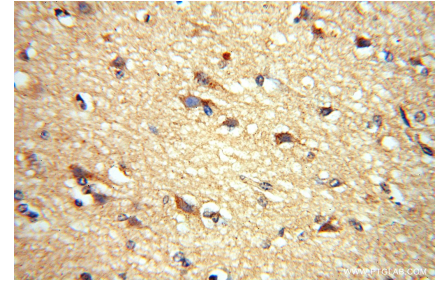
Selected Validation Data



human brain tissue were subjected to SDS PAGE followed by western blot with 16479-1-AP (ADO antibody) at dilution of 1:300 incubated at room temperature for 1.5 hours.



Immunohistochemical analysis of paraffin-embedded human brain using 16479-1-AP (ADO antibody) at dilution of 1:50 (under 10x lens).



Immunohistochemical analysis of paraffin-embedded human brain using 16479-1-AP (ADO antibody) at dilution of 1:50 (under 40x lens).