

## DPEP2 Polyclonal antibody

Catalog Number: 16466-1-AP

3 Publications

## Basic Information

## Catalog Number:

16466-1-AP

## Size:

200 µg/ml

## Source:

Rabbit

## Isotype:

IgG

## Immunogen Catalog Number:

AG9545

## GenBank Accession Number:

BC024021

## GeneID (NCBI):

64174

## UNIPROT ID:

Q9H4A9

## Full Name:

dipeptidase 2

## Calculated MW:

399 aa, 44 kDa

## Observed MW:

45 kDa, 50 kDa

## Purification Method:

Antigen affinity purification

## Recommended Dilutions:

IHC 1:20-1:200

## Applications

## Tested Applications:

IHC, ELISA

## Cited Applications:

WB, IP, IHC

## Species Specificity:

human, mouse, rat

## Cited Species:

human

**Note-IHC: suggested antigen retrieval with TE buffer pH 9.0; (\*) Alternatively, antigen retrieval may be performed with citrate buffer pH 6.0**

## Positive Controls:

IHC : human kidney tissue,

## Background Information

DPEP2(Dipeptidase 2) may play an important role in the regulation of leukotriene activity which converts leukotriene d4 to leukotriene e4. It belongs to the peptidase M19 family. This protein has 2 isoforms produced by alternative splicing with the molecular weight of 53 kDa and 44 kDa.

## Notable Publications

Author	Pubmed ID	Journal	Application
Wu Hsin-Yi HY	20572634	J Proteome Res	WB,IP
Yuanyi Wang	37449493	Oncol Rep	WB,IHC
Xiangqian Zhang	37375818	Pharmaceuticals (Basel)	

## Storage

## Storage:

Store at -20°C. Stable for one year after shipment.

## Storage Buffer:

PBS with 0.02% sodium azide and 50% glycerol pH 7.3.

Aliquoting is unnecessary for -20°C storage

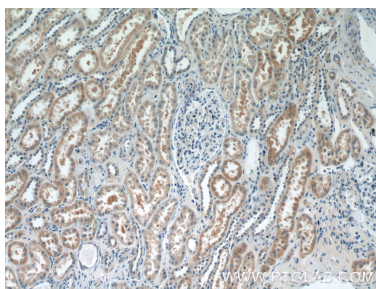
For technical support and original validation data for this product please contact:

T: 4006900926

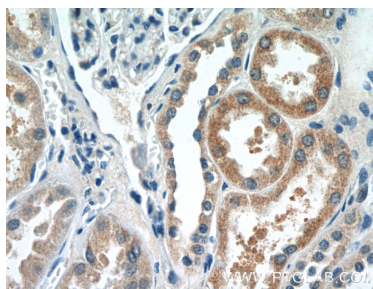
E: [Proteintech-CN@ptglab.com](mailto:Proteintech-CN@ptglab.com)W: [ptgcn.com](http://ptgcn.com)

This product is exclusively available under Proteintech Group brand and is not available to purchase from any other manufacturer.

## Selected Validation Data



Immunohistochemical analysis of paraffin-embedded human kidney tissue slide using 16466-1-AP (DPEP2 Antibody) at dilution of 1:50 (under 10x lens).



Immunohistochemical analysis of paraffin-embedded human kidney tissue slide using 16466-1-AP (DPEP2 Antibody) at dilution of 1:50 (under 40x lens).