

For Research Use Only

RPS6KA1 Polyclonal antibody

Catalog Number: 16463-1-AP

7 Publications



Basic Information

Catalog Number:

16463-1-AP

Size:

260 µg/ml

Source:

Rabbit

Isotype:

IgG

Immunogen Catalog Number:

AG9537

GenBank Accession Number:

BC014966

GeneID (NCBI):

6195

UNIPROT ID:

Q15418

Full Name:

ribosomal protein S6 kinase, 90kDa, polypeptide 1

Calculated MW:

735 aa, 83 kDa

Observed MW:

83-90, 73 kDa

Purification Method:

Antigen affinity purification

Recommended Dilutions:

WB 1:500-1:2000

IP 0.5-4.0 µg for 1.0-3.0 mg of total protein lysate

IHC 1:50-1:500

Applications

Tested Applications:

IHC, IP, WB, ELISA

Cited Applications:

WB

Species Specificity:

human

Cited Species:

human, rat

Note-IHC: suggested antigen retrieval with TE buffer pH 9.0; (*) Alternatively, antigen retrieval may be performed with citrate buffer pH 6.0

Positive Controls:

WB: K-562 cells,

IP: K-562 cells,

IHC: human liver cancer tissue,

Background Information

The 90 kDa ribosomal S6 kinases (RSK1-4) are a family of widely expressed serine/threonine kinases and play an important role in the MAPK signaling cascade and act downstream of ERK1/2 signaling. It can mediate mitogenic and stress-induced activation of the transcription factors CREB1, ETV1/ER81 and NR4A1/NUR77. RSK1 (RPS6KA1) is also designated as p90RSK associated with cellular proliferation, survival and differentiation. RPS6KA1 has some phosphorylation sites including Ser380, Thr359 and Ser363 which are important for kinase activation (PMID: 16458888, 30813401, 17259979, 10679322)

Notable Publications

| Author | Pubmed ID | Journal | Application |
|----------------|-----------|----------------|-------------|
| Yunfeng Hu | 36209218 | Cell Death Dis | WB |
| Chenggang Zhao | 35606353 | Oncogenesis | WB |
| Qing-Ping Yao | 31990052 | J Cell Physiol | WB |

Storage

Storage:

Store at -20°C. Stable for one year after shipment.

Storage Buffer:

PBS with 0.02% sodium azide and 50% glycerol pH 7.3.

Aliquoting is unnecessary for -20°C storage

For technical support and original validation data for this product please contact:

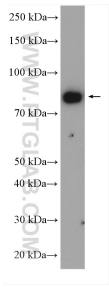
T: 4006900926

E: Proteintech-CN@ptglab.com

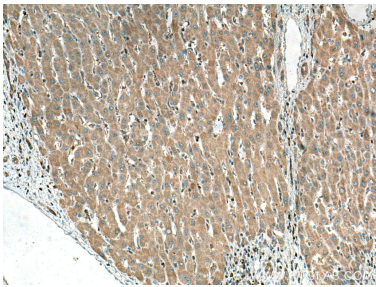
W: ptgcn.com

This product is exclusively available under Proteintech Group brand and is not available to purchase from any other manufacturer.

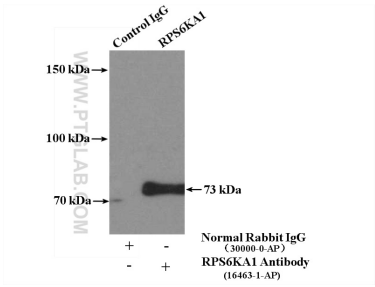
Selected Validation Data



K-562 cells were subjected to SDS PAGE followed by western blot with 16463-1-AP (RPS6KA1 antibody) at dilution of 1:1000 incubated at room temperature for 1.5 hours.



Immunohistochemical analysis of paraffin-embedded human liver cancer tissue slide using 16463-1-AP (RPS6KA1 antibody) at dilution of 1:200 (under 10x lens). Heat mediated antigen retrieval with Tris-EDTA buffer (pH 9.0).



IP result of anti-RPS6KA1 (IP:16463-1-AP, 4ug; Detection:16463-1-AP 1:300) with K-562 cells lysate 2800ug.