

For Research Use Only

# IMMP1L Polyclonal antibody

Catalog Number: 16434-1-AP



## Basic Information

Catalog Number:

16434-1-AP

Size:

400 µg/ml

Source:

Rabbit

Isotype:

IgG

Immunogen Catalog Number:

AG9747

GenBank Accession Number:

BC023595

GeneID (NCBI):

196294

UNIPROT ID:

Q96LU5

Full Name:

IMP1 inner mitochondrial membrane  
peptidase-like (S. cerevisiae)

Calculated MW:

166 aa, 19 kDa

Observed MW:

19 kDa

Purification Method:

Antigen affinity purification

Recommended Dilutions:

WB 1:500-1:2000

## Applications

Tested Applications:

WB, ELISA

Species Specificity:

human, mouse, rat

Positive Controls:

WB : mouse liver tissue,

## Background Information

IMMP1L, a member of the peptidase S26 family, catalyzes the removal of transport peptides that target proteins from the mitochondrial matrix, across the inner membrane, and into the intermembrane space. IMMP1L is localized on the Mitochondrion inner membrane. Heterodimer of 2 subunits, IMMPL1 and IMMPL2 (PMID: 26341627; 28337252).

## Storage

Storage:

Store at -20°C. Stable for one year after shipment.

Storage Buffer:

PBS with 0.02% sodium azide and 50% glycerol pH 7.3.

Aliquoting is unnecessary for -20°C storage

For technical support and original validation data for this product please contact:

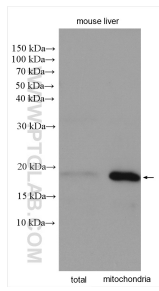
T: 4006900926

E: [Proteintech-CN@ptglab.com](mailto:Proteintech-CN@ptglab.com)

W: [ptgcn.com](http://ptgcn.com)

This product is exclusively available under Proteintech Group brand and is not available to purchase from any other manufacturer.

## Selected Validation Data



mouse liver total extract lysate and mitochondria extract lysate were subjected to SDS PAGE followed by western blot with 16434-1-AP (IMP1L antibody) at dilution of 1:1000 incubated at room temperature for 1.5 hours.