

For Research Use Only

# NLE1 Polyclonal antibody

Catalog Number: 16419-1-AP



## Basic Information

|  |   |  |
|--|---|--|
| <b>Catalog Number:</b><br>16419-1-AP       | <b>GenBank Accession Number:</b><br>BC012075          | <b>Purification Method:</b><br>Antigen affinity purification |
| <b>Size:</b><br>500 µg/ml                  | <b>GeneID (NCBI):</b><br>54475                        | <b>Recommended Dilutions:</b><br>WB 1:200-1:1000             |
| <b>Source:</b><br>Rabbit                   | <b>UNIPROT ID:</b><br>Q9NVX2                          |  |
| <b>Isotype:</b><br>IgG                     | <b>Full Name:</b><br>notchless homolog 1 (Drosophila) |  |
| <b>Immunogen Catalog Number:</b><br>AG9604 | <b>Calculated MW:</b><br>485 aa, 53 kDa               |  |
|  | <b>Observed MW:</b><br>45-55 kDa                      |  |

## Applications

|  |   |
|--|---|
| <b>Tested Applications:</b><br>WB, ELISA         | <b>Positive Controls:</b><br>WB : BxPC-3 cells, |
| <b>Species Specificity:</b><br>human, mouse, rat |   |

## Background Information

### Storage

**Storage:**  
Store at -20°C. Stable for one year after shipment.

**Storage Buffer:**  
PBS with 0.02% sodium azide and 50% glycerol pH 7.3.

Aliquoting is unnecessary for -20°C storage

For technical support and original validation data for this product please contact:

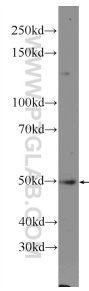
T: 4006900926

E: [Proteintech-CN@ptglab.com](mailto:Proteintech-CN@ptglab.com)

W: [ptgcn.com](http://ptgcn.com)

This product is exclusively available under Proteintech Group brand and is not available to purchase from any other manufacturer.

## Selected Validation Data



BxPC-3 cells were subjected to SDS PAGE followed by western blot with 16419-1-AP (NLE1 Antibody) at dilution of 1:300 incubated at room temperature for 1.5 hours.