

For Research Use Only

YIF1B Polyclonal antibody

Catalog Number: 16406-1-AP



Basic Information

Catalog Number:

16406-1-AP

Size:

700 ug/ml

Source:

Rabbit

Isotype:

IgG

Immunogen Catalog Number:

AG9538

GenBank Accession Number:

BC014974

GeneID (NCBI):

90522

UNIPROT ID:

Q5BJH7

Full Name:

Yip1 interacting factor homolog B (S. cerevisiae)

Calculated MW:

294 aa, 32 kDa

Observed MW:

31-34 kDa

Purification Method:

Antigen affinity purification

Recommended Dilutions:

WB 1:1000-1:6000

Applications

Tested Applications:

WB, ELISA

Species Specificity:

human, mouse, rat

Positive Controls:

WB : SK-N-SH cells, mouse brain tissue, rat brain tissue

Background Information

YIF1B is an intracellular membrane-bound protein belonging to the Yip family, a trafficking protein orthologue of YIF1P that was initially identified in *Saccharomyces cerevisiae* as interacting with YIP1P and essential for secretion. YIF1B is expressed in various tissues, especially in brain neurons (PMID: 33103737). YIF1B is localized in the intermediate compartment between the endoplasmic reticulum (ER) and the Golgi apparatus (PMID: 26077767). Western blot analysis detected YIF1B at an apparent molecular mass of 31 kDa.

Storage

Storage:

Store at -20°C. Stable for one year after shipment.

Storage Buffer:

PBS with 0.02% sodium azide and 50% glycerol pH 7.3.

Aliquoting is unnecessary for -20°C storage

For technical support and original validation data for this product please contact:

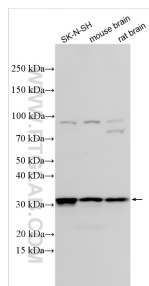
T: 4006900926

E: Proteintech-CN@ptglab.com

W: ptgcn.com

This product is exclusively available under Proteintech Group brand and is not available to purchase from any other manufacturer.

Selected Validation Data



Various lysates were subjected to SDS PAGE followed by western blot with 16406-1-AP (YIF1B antibody) at dilution of 1:3000 incubated at room temperature for 1.5 hours.