

For Research Use Only

# PISD Polyclonal antibody

Catalog Number: 16401-1-AP

Featured Product

4 Publications



## Basic Information

**Catalog Number:**

16401-1-AP

**Size:**

400 µg/ml

**Source:**

Rabbit

**Isotype:**

IgG

**Immunogen Catalog Number:**

AG9499

**GenBank Accession Number:**

BC001482

**GeneID (NCBI):**

23761

**UNIPROT ID:**

Q9UG56

**Full Name:**

phosphatidylserine decarboxylase

**Calculated MW:**

375aa,43 kDa; 408aa,46 kDa

**Observed MW:**

50-55 kDa

**Purification Method:**

Antigen affinity purification

**Recommended Dilutions:**

WB 1:500-1:2400

IP 0.5-4.0 µg for 1.0-3.0 mg of total protein lysate

IHC 1:20-1:200

## Applications

**Tested Applications:**

IHC, IP, WB, ELISA

**Cited Applications:**

WB

**Species Specificity:**

human, mouse, rat

**Cited Species:**

human

**Note-IHC: suggested antigen retrieval with TE buffer pH 9.0; (\*) Alternatively, antigen retrieval may be performed with citrate buffer pH 6.0**

**Positive Controls:**

WB : K-562 cells, COLO 320 cells, HeLa cells, HepG2 cells, human kidney tissue, human spleen tissue, L02 cells, NIH/3T3 cells

IP : L02 cells,

IHC : human kidney tissue,

## Background Information

PISD(Phosphatidylserine decarboxylase proenzyme) belongs to the phosphatidylserine decarboxylase family. It contains a conserved LGST motif that functions as an autocatalytic cleavage site where the proenzyme is split into mature alpha and beta subunits. It has 2 isoforms produced by alternative splicing. This antibody is specific to PISD. The sequence correspond to the beta isoform.

## Notable Publications

Author	Pubmed ID	Journal	Application
Ayesh K Seneviratne	30930145	Cell Stem Cell	WB
Yawen Ma	33675985	Cancer Lett	WB
Yaoyao Song	36589750	Front Cell Dev Biol	

## Storage

**Storage:**

Store at -20°C. Stable for one year after shipment.

**Storage Buffer:**

PBS with 0.02% sodium azide and 50% glycerol pH 7.3.

Aliquoting is unnecessary for -20°C storage

For technical support and original validation data for this product please contact:

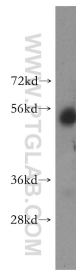
T: 4006900926

E: Proteintech-CN@ptglab.com

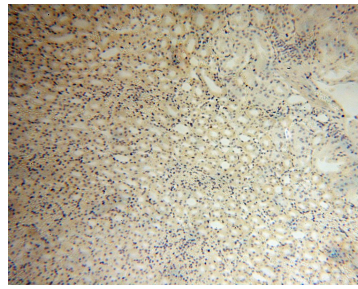
W: ptgcn.com

**This product is exclusively available under Proteintech Group brand and is not available to purchase from any other manufacturer.**

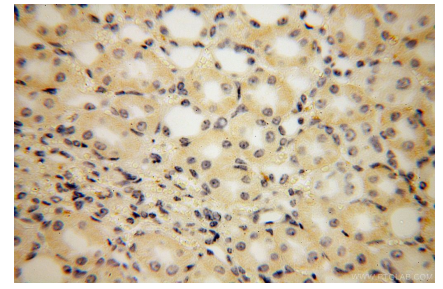
## Selected Validation Data



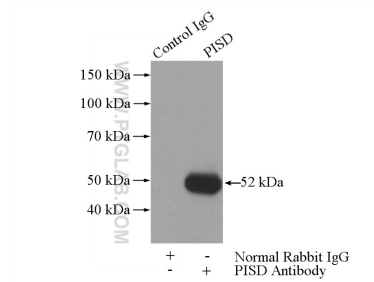
K-562 cells were subjected to SDS PAGE followed by western blot with 16401-1-AP (PISD antibody) at dilution of 1:300 incubated at room temperature for 1.5 hours.



Immunohistochemical analysis of paraffin-embedded human kidney using 16401-1-AP (PISD antibody) at dilution of 1:100 (under 10x lens).



Immunohistochemical analysis of paraffin-embedded human kidney using 16401-1-AP (PISD antibody) at dilution of 1:100 (under 40x lens).



IP result of anti-PISD (IP:16401-1-AP, 3ug; Detection:16401-1-AP 1:500) with LO2 cells lysate 1400ug.