

For Research Use Only

Gamma Synuclein/SNCG Polyclonal antibody, PBS Only

Catalog Number: 16398-1-PBS



Basic Information

Catalog Number:

16398-1-PBS

Source:

Rabbit

Isotype:

IgG

Immunogen Catalog Number:

AG9493

GenBank Accession Number:

BC014098

GeneID (NCBI):

6623

UNIPROT ID:

O76070

Full Name:

synuclein, gamma (breast cancer-specific protein 1)

Calculated MW:

127 aa, 13 kDa

Observed MW:

13 kDa

Purification Method:

Antigen affinity purification

Applications

Tested Applications:

WB, IHC, Indirect ELISA

Species Specificity:

human, mouse

Background Information

Gamma synuclein, also known as SNCG, BCSG1, belongs to the synuclein family. SNCG is a synuclein protein found primarily in the peripheral nervous system and retina (PMID 11806835). SNCG is the least conserved of the synuclein proteins and is detected in the brain, ovarian tumors, and the olfactory epithelium (PMID 9750188). SNCG is expressed in high abundance in breast cancer but scarcely at all in a normal breast and is considered a breast cancer marker (PMID: 10813729).

Storage

Storage:

Store at -80°C.

The product is shipped with ice packs. Upon receipt, store it immediately at -80°C

Storage Buffer:

PBS only, pH7.3

For technical support and original validation data for this product please contact:

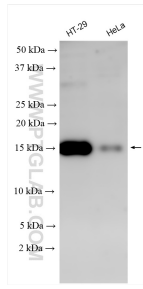
T: 4006900926

E: Proteintech-CN@ptglab.com

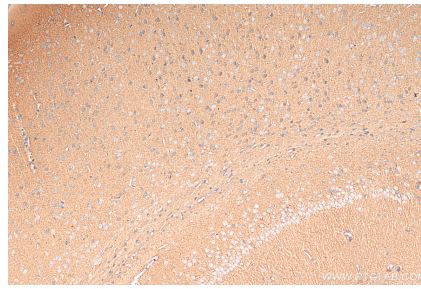
W: ptgcn.com

This product is exclusively available under Proteintech Group brand and is not available to purchase from any other manufacturer.

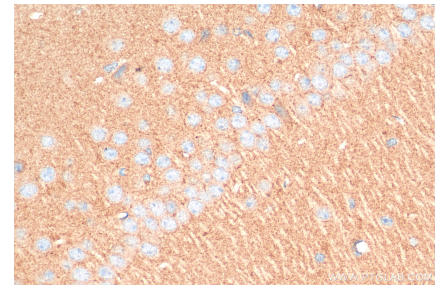
Selected Validation Data



Various lysates were subjected to SDS PAGE followed by western blot with 16398-1-AP (SNCG antibody) at dilution of 1:800 incubated at room temperature for 1.5 hours. This data was developed using the same antibody clone with 16398-1-PBS in a different storage buffer formulation.



Immunohistochemical analysis of paraffin-embedded mouse brain tissue slide using 16398-1-AP (SNCG antibody) at dilution of 1:200 (under 10x lens). Heat mediated antigen retrieval with Tris-EDTA buffer (pH 9.0). This data was developed using the same antibody clone with 16398-1-PBS in a different storage buffer formulation.



Immunohistochemical analysis of paraffin-embedded mouse brain tissue slide using 16398-1-AP (SNCG antibody) at dilution of 1:200 (under 40x lens). Heat mediated antigen retrieval with Tris-EDTA buffer (pH 9.0). This data was developed using the same antibody clone with 16398-1-PBS in a different storage buffer formulation.