

For Research Use Only

# MRPL44 Polyclonal antibody

Catalog Number: 16394-1-AP

38 Publications



## Basic Information

Catalog Number:

16394-1-AP

Size:

400 µg/ml

Source:

Rabbit

Isotype:

IgG

Immunogen Catalog Number:

AG9485

GenBank Accession Number:

BC012058

GeneID (NCBI):

65080

UNIPROT ID:

Q9H9J2

Full Name:

mitochondrial ribosomal protein L44

Calculated MW:

332 aa, 38 kDa

Observed MW:

38 kDa

Purification Method:

Antigen affinity purification

Recommended Dilutions:

WB 1:5000-1:50000

IHC 1:20-1:200

## Applications

Tested Applications:

WB, IHC, ELISA

Cited Applications:

WB, IF, IP

Species Specificity:

human, mouse, rat

Cited Species:

human, mouse, monkey, zebrafish, yeast

**Note-IHC: suggested antigen retrieval with TE buffer pH 9.0; (\*) Alternatively, antigen retrieval may be performed with citrate buffer pH 6.0**

Positive Controls:

WB : A549 cells, rat brain tissue, HeLa cells, Jurkat cells, K-562 cells

IHC : human ovary tumor tissue,

## Background Information

Mammalian mitochondrial ribosomal proteins are encoded by nuclear genes and help in protein synthesis within the mitochondrion. Mitochondrial ribosomes (mitoribosomes) consist of a small 28S subunit and a large 39S subunit. MRP-L44 (mitochondrial ribosomal protein L44) is a 332 amino acid protein that localizes to the mitochondrion, where it exists as a component of the 39S ribosomal subunit and works in conjunction with other MRPs to mediate protein synthesis.

## Notable Publications

Author	Pubmed ID	Journal	Application
Ying Shu	36314841	EMBO J	WB,IP
Uwe Richter	26504172	J Cell Biol	WB
Christopher B Jackson	30358850	Hum Mol Genet	WB

## Storage

Storage:

Store at -20°C. Stable for one year after shipment.

Storage Buffer:

PBS with 0.02% sodium azide and 50% glycerol pH 7.3.

Aliquoting is unnecessary for -20°C storage

For technical support and original validation data for this product please contact:

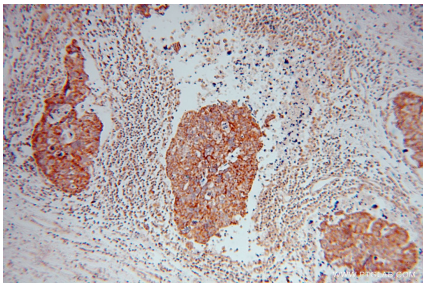
T: 4006900926

E: [Proteintech-CN@ptglab.com](mailto:Proteintech-CN@ptglab.com)

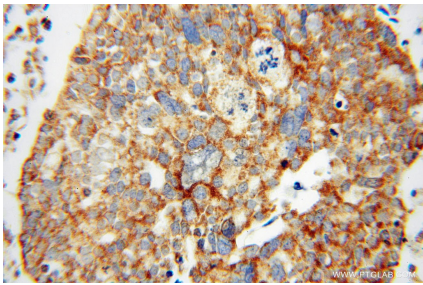
W: [ptgcn.com](http://ptgcn.com)

This product is exclusively available under Proteintech Group brand and is not available to purchase from any other manufacturer.

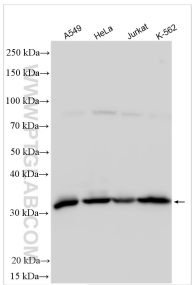
Selected Validation Data



Immunohistochemical analysis of paraffin-embedded human ovary tumor using 16394-1-AP (MRPL44 antibody) at dilution of 1:50 (under 10x lens).



Immunohistochemical analysis of paraffin-embedded human ovary tumor using 16394-1-AP (MRPL44 antibody) at dilution of 1:50 (under 40x lens).



Various lysates were subjected to SDS PAGE followed by western blot with 16394-1-AP (MRPL44 antibody) at dilution of 1:30000 incubated at room temperature for 1.5 hours.