

For Research Use Only

# MRPS28 Polyclonal antibody

Catalog Number: 16378-1-AP **1 Publications**



## Basic Information

<b>Catalog Number:</b> 16378-1-AP	<b>GenBank Accession Number:</b> BC010150	<b>Purification Method:</b> Antigen affinity purification
<b>Size:</b> 550 µg/ml	<b>GeneID (NCBI):</b> 28957	<b>Recommended Dilutions:</b> WB 1:1000-1:4000 IHC 1:500-1:2000 IF 1:50-1:500
<b>Source:</b> Rabbit	<b>UNIPROT ID:</b> Q9Y2Q9	
<b>Isotype:</b> IgG	<b>Full Name:</b> mitochondrial ribosomal protein S28	
<b>Immunogen Catalog Number:</b> AG9354	<b>Calculated MW:</b> 187 aa, 21 kDa	
	<b>Observed MW:</b> 21 kDa	

## Applications

<b>Tested Applications:</b> IF/ICC, IHC, WB, ELISA	<b>Positive Controls:</b> WB : COLO 320 cells, IHC : human liver tissue, IF : HepG2 cells, HeLa cells
<b>Cited Applications:</b> WB	
<b>Species Specificity:</b> human, mouse, rat	
<b>Cited Species:</b> human	
<b>Note-IHC: suggested antigen retrieval with TE buffer pH 9.0; (*) Alternatively, antigen retrieval may be performed with citrate buffer pH 6.0</b>	

## Background Information

### Notable Publications

Author	Pubmed ID	Journal	Application
Juliette Pulman	30566640	Hum Mol Genet	WB

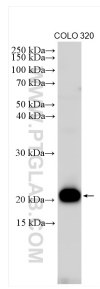
## Storage

**Storage:**  
Store at -20°C. Stable for one year after shipment.  
**Storage Buffer:**  
PBS with 0.02% sodium azide and 50% glycerol pH 7.3.  
Aliquoting is unnecessary for -20°C storage

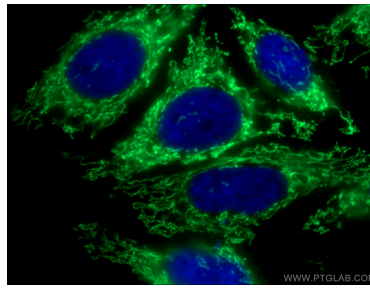
For technical support and original validation data for this product please contact:  
T: 4006900926 E: Proteintech-CN@ptglab.com W: ptgcn.com

This product is exclusively available under Proteintech Group brand and is not available to purchase from any other manufacturer.

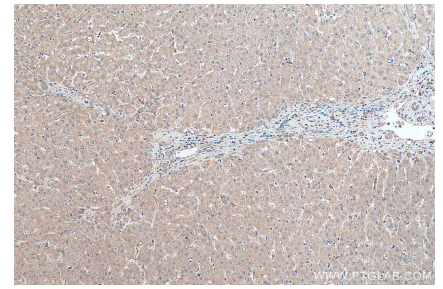
## Selected Validation Data



COLO 320 cells were subjected to SDS PAGE followed by western blot with 16378-1-AP (MRPS28 antibody) at dilution of 1:2000 incubated at room temperature for 1.5 hours.



Immunofluorescent analysis of (4% PFA) fixed HepG2 cells using 16378-1-AP (MRPS28 antibody) at dilution of 1:50 and CoraLite488-Conjugated AffiniPure Goat Anti-Rabbit IgG(H+L).



Immunohistochemical analysis of paraffin-embedded human liver tissue slide using 16378-1-AP (MRPS28 antibody) at dilution of 1:1000 (under 10x lens). Heat mediated antigen retrieval with Tris-EDTA buffer (pH 9.0).