

For Research Use Only

# HARS Polyclonal antibody

Catalog Number: 16375-1-AP **2 Publications**



## Basic Information

<b>Catalog Number:</b> 16375-1-AP	<b>GenBank Accession Number:</b> BC011807	<b>Purification Method:</b> Antigen affinity purification
<b>Size:</b> 400 µg/ml	<b>GeneID (NCBI):</b> 3035	<b>Recommended Dilutions:</b> WB 1:500-1:1000 IF 1:10-1:100
<b>Source:</b> Rabbit	<b>UNIPROT ID:</b> P12081	
<b>Isotype:</b> IgG	<b>Full Name:</b> histidyl-tRNA synthetase	
<b>Immunogen Catalog Number:</b> AG9333	<b>Calculated MW:</b> 509 aa, 57 kDa	
	<b>Observed MW:</b> 50 kDa	

## Applications

<b>Tested Applications:</b> IF/ICC, WB, ELISA	<b>Positive Controls:</b> WB : mouse liver tissue, HeLa cells, human kidney tissue, K-562 cells, mouse brain tissue, mouse heart tissue, mouse lung tissue IF : MCF-7 cells,
<b>Cited Applications:</b> WB	
<b>Species Specificity:</b> human, mouse, rat	
<b>Cited Species:</b> human, mouse	

## Background Information

HARS is a cytoplasmic enzyme that belongs to the class II family of aminoacyl-tRNA synthetases. The enzyme is responsible for the synthesis of histidyl-transfer RNA, which is essential for the incorporation of histidine into proteins. HARS is located in a head-to-head orientation with HARS1 on chromosome five, where the homologous genes share a bidirectional promoter. The gene product is a frequent target of autoantibodies in the human autoimmune disease polymyositis/dermatomyositis.

## Notable Publications

Author	Pubmed ID	Journal	Application
Maria C Passarelli	35288656	Nat Cell Biol	WB
Wei Fan	38438409	Sci Rep	WB

## Storage

**Storage:**  
Store at -20°C. Stable for one year after shipment.  
**Storage Buffer:**  
PBS with 0.02% sodium azide and 50% glycerol pH 7.3.  
Aliquoting is unnecessary for -20°C storage

For technical support and original validation data for this product please contact:

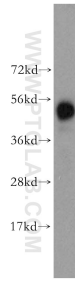
T: 4006900926

E: [Proteintech-CN@ptglab.com](mailto:Proteintech-CN@ptglab.com)

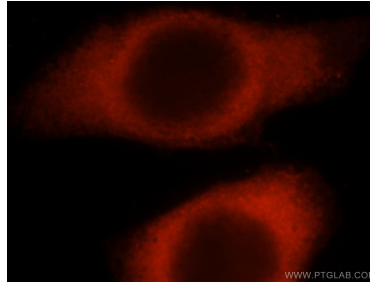
W: [ptgcn.com](http://ptgcn.com)

**This product is exclusively available under Proteintech Group brand and is not available to purchase from any other manufacturer.**

## Selected Validation Data



mouse liver tissue were subjected to SDS PAGE followed by western blot with 16375-1-AP (HARS antibody) at dilution of 1:500 incubated at room temperature for 1.5 hours.



Immunofluorescent analysis of MCF-7 cells, using HARS antibody 16375-1-AP at 1:25 dilution and Rhodamine-labeled goat anti-rabbit IgG (red).