

For Research Use Only

MRPS21 Polyclonal antibody

Catalog Number: 16359-1-AP



Basic Information

Catalog Number: 16359-1-AP	GenBank Accession Number: BC004566	Purification Method: Antigen affinity purification
Concentration: 450 ug/ml	GeneID (NCBI): 54460	Recommended Dilutions: IHC 1:50-1:500 IF/ICC 1:50-1:500
Source: Rabbit	UNIPROT ID: P82921	
Isotype: IgG	Full Name: mitochondrial ribosomal protein S21	
Immunogen Catalog Number: AG8343	Calculated MW: 87 aa, 11 kDa	

Applications

Tested Applications:

IHC, IF/ICC, ELISA

Species Specificity:

human, mouse, rat

Positive Controls:

IHC : human pancreas tissue,

IF/ICC : HepG2 cells,

Note-IHC: suggested antigen retrieval with TE buffer pH 9.0; (*) Alternatively, antigen retrieval may be performed with citrate buffer pH 6.0

Background Information

Storage

Storage:

Store at -20°C. Stable for one year after shipment.

Storage Buffer:

PBS with 0.02% sodium azide and 50% glycerol pH 7.3.

Aliquoting is unnecessary for -20°C storage

For technical support and original validation data for this product please contact:

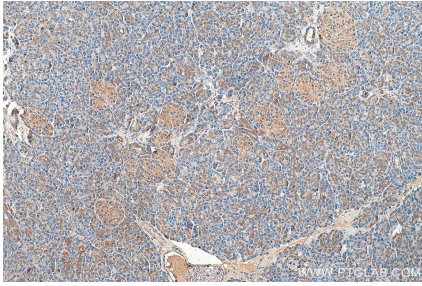
T: 4006900926

E: Proteintech-CN@ptglab.com

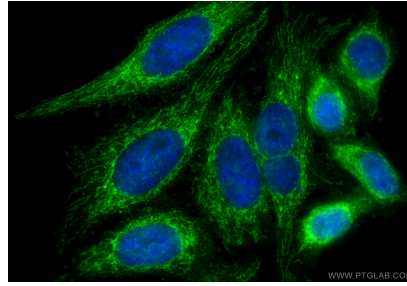
W: ptgcn.com

This product is exclusively available under Proteintech Group brand and is not available to purchase from any other manufacturer.

Selected Validation Data



Immunohistochemical analysis of paraffin-embedded human pancreas tissue slide using 16359-1-AP (MRPS21 antibody) at dilution of 1:200 (under 10x lens).



Immunofluorescent analysis of (4% PFA) fixed HepG2 cells using MRPS21 antibody (16359-1-AP) at dilution of 1:200 and CoraLite® 488-Conjugated Goat Anti-Rabbit IgG(H+L) (SA00013-2).