

For Research Use Only

cyclin I Polyclonal antibody

Catalog Number: 16357-1-AP



Basic Information

Catalog Number:

16357-1-AP

Size:

550 µg/ml

Source:

Rabbit

Isotype:

IgG

Immunogen Catalog Number:

AG0493

GenBank Accession Number:

BC004975

GeneID (NCBI):

10983

UNIPROT ID:

Q14094

Full Name:

cyclin I

Calculated MW:

43 kDa

Observed MW:

43 kDa

Purification Method:

Antigen affinity purification

Recommended Dilutions:

WB 1:2000-1:10000

IHC 1:20-1:200

Applications

Tested Applications:

IHC, WB, ELISA

Species Specificity:

human, mouse, rat

Note-IHC: suggested antigen retrieval with TE buffer pH 9.0; (*) Alternatively, antigen retrieval may be performed with citrate buffer pH 6.0

Positive Controls:

WB : mouse brain tissue, human brain tissue, rat skeletal muscle tissue, mouse skeletal muscle tissue, rat brain tissue

IHC : human heart tissue, human brain tissue, human liver tissue, human lung tissue, human ovary tissue, human placenta tissue, human spleen tissue, human testis tissue

Background Information

Storage

Storage:

Store at -20°C. Stable for one year after shipment.

Storage Buffer:

PBS with 0.02% sodium azide and 50% glycerol pH 7.3.

Aliquoting is unnecessary for -20°C storage

For technical support and original validation data for this product please contact:

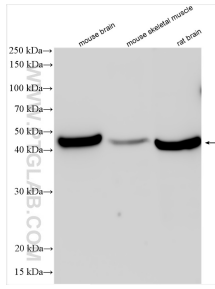
T: 4006900926

E: Proteintech-CN@ptglab.com

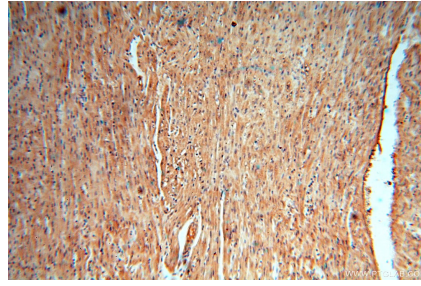
W: ptgcn.com

This product is exclusively available under Proteintech Group brand and is not available to purchase from any other manufacturer.

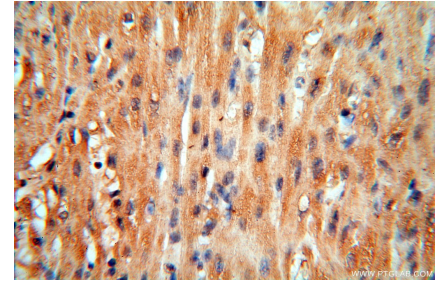
Selected Validation Data



Various lysates were subjected to SDS PAGE followed by western blot with 16357-1-AP (cyclin I antibody) at dilution of 1:5000 incubated at room temperature for 1.5 hours.



Immunohistochemical analysis of paraffin-embedded human heart using 16357-1-AP (cyclin I antibody) at dilution of 1:50 (under 10x lens).



Immunohistochemical analysis of paraffin-embedded human heart using 16357-1-AP (cyclin I antibody) at dilution of 1:50 (under 40x lens).