

For Research Use Only

# BLZF1 Polyclonal antibody

Catalog Number: 16354-1-AP

3 Publications



## Basic Information

Catalog Number:

16354-1-AP

Size:

160 µg/ml

Source:

Rabbit

Isotype:

IgG

Immunogen Catalog Number:

AG9564

GenBank Accession Number:

BC020716

GeneID (NCBI):

8548

UNIPROT ID:

Q9H2G9

Full Name:

basic leucine zipper nuclear factor 1

Calculated MW:

400 aa, 45 kDa

Observed MW:

45 kDa

Purification Method:

Antigen affinity purification

Recommended Dilutions:

WB 1:500-1:1000

IHC 1:50-1:500

## Applications

Tested Applications:

WB, IHC, ELISA

Cited Applications:

WB

Species Specificity:

human, mouse

Cited Species:

human

**Note-IHC: suggested antigen retrieval with TE buffer pH 9.0; (\*) Alternatively, antigen retrieval may be performed with citrate buffer pH 6.0**

Positive Controls:

WB : K-562 cells, Jurkat cells

IHC : human liver cancer tissue, mouse liver tissue

## Background Information

BLZF1 (basic leucine zipper nuclear factor 1), also known as JEM1 or Golgin-45, maps to human chromosome 1q24, encodes for a 3 kb mRNA that is translated into a 45 kDa protein. BLZF1 is a member of b-ZIP family, and has been implicated in epigenetic regulation and Wnt/  $\beta$ -catenin signaling.

## Notable Publications

Author	Pubmed ID	Journal	Application
Maryam Arab	36512212	Methods Mol Biol	WB
Michael E Bekier	28814501	Mol Biol Cell	WB
Sarah Bui	36512231	Methods Mol Biol	WB

## Storage

Storage:

Store at -20°C. Stable for one year after shipment.

Storage Buffer:

PBS with 0.02% sodium azide and 50% glycerol pH 7.3.

Aliquoting is unnecessary for -20°C storage

For technical support and original validation data for this product please contact:

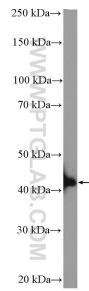
T: 4006900926

E: [Proteintech-CN@ptglab.com](mailto:Proteintech-CN@ptglab.com)

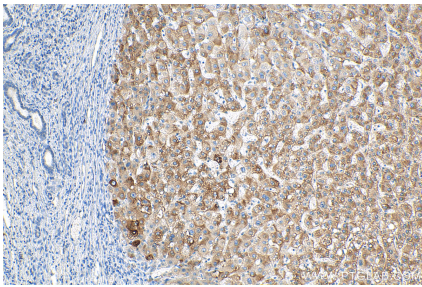
W: [ptgcn.com](http://ptgcn.com)

This product is exclusively available under Proteintech Group brand and is not available to purchase from any other manufacturer.

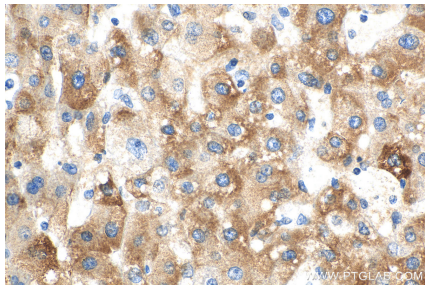
Selected Validation Data



K-562 cells were subjected to SDS PAGE followed by western blot with 16354-1-AP (BLZF1 antibody) at dilution of 1:600 incubated at room temperature for 1.5 hours.



Immunohistochemical analysis of paraffin-embedded human liver cancer tissue slide using 16354-1-AP (BLZF1 antibody) at dilution of 1:200 (under 10x lens). Heat mediated antigen retrieval with Tris-EDTA buffer (pH 9.0).



Immunohistochemical analysis of paraffin-embedded human liver cancer tissue slide using 16354-1-AP (BLZF1 antibody) at dilution of 1:200 (under 40x lens). Heat mediated antigen retrieval with Tris-EDTA buffer (pH 9.0).