

For Research Use Only

# PSG11 Polyclonal antibody, PBS Only

Catalog Number:16352-1-PBS



## Basic Information

Catalog Number:

16352-1-PBS

Concentration:

1 mg/ml

Source:

Rabbit

Isotype:

IgG

Immunogen Catalog Number:

AG9562

GenBank Accession Number:

BC020711

GeneID (NCBI):

5680

UNIPROT ID:

Q9UQ72

Full Name:

pregnancy specific beta-1-glycoprotein 11

Calculated MW:

219 aa, 24 kDa

Observed MW:

24 kDa

Purification Method:

Antigen affinity purification

## Applications

Tested Applications:

WB, IHC, IF/ICC, Indirect ELISA

Species Specificity:

human, mouse

## Background Information

PSG11, also named as PSG13, PSG14, PSBG-11 and PSBG-13, belongs to the immunoglobulin superfamily and CEA family. PSBG are produced in high quantity during pregnancy. PSG11 and other PSGs induce dose-dependent secretion of anti-inflammatory cytokines by human monocytes. (PMID:11327547)

## Storage

Storage:

Store at -80°C.

The product is shipped with ice packs. Upon receipt, store it immediately at -80°C

Storage Buffer:

PBS only, pH7.3

For technical support and original validation data for this product please contact:

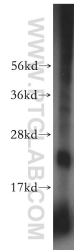
T: 4006900926

E: Proteintech-CN@ptglab.com

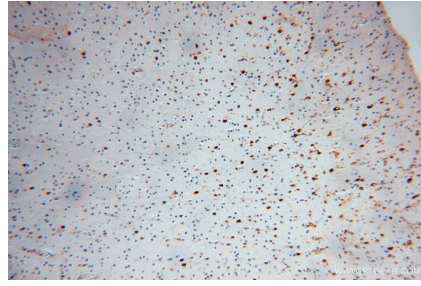
W: ptgcn.com

This product is exclusively available under Proteintech Group brand and is not available to purchase from any other manufacturer.

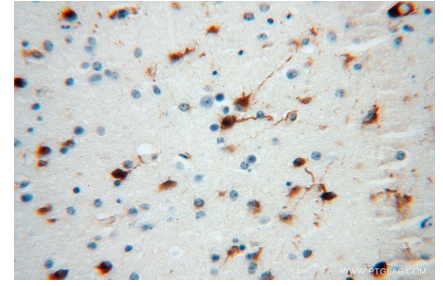
## Selected Validation Data



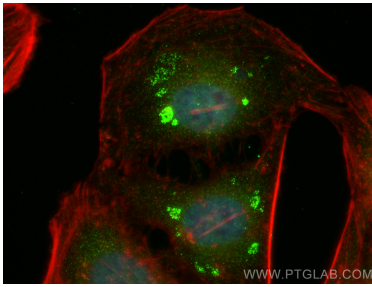
mouse uterus tissue were subjected to SDS PAGE followed by western blot with 16352-1-AP (PSG11 antibody) at dilution of 1:600 incubated at room temperature for 1.5 hours. This data was developed using the same antibody clone with 16352-1-PBS in a different storage buffer formulation.



Immunohistochemical analysis of paraffin-embedded human brain using 16352-1-AP (PSG11 antibody) at dilution of 1:100 (under 10x lens). This data was developed using the same antibody clone with 16352-1-PBS in a different storage buffer formulation.



Immunohistochemical analysis of paraffin-embedded human brain using 16352-1-AP (PSG11 antibody) at dilution of 1:100 (under 40x lens). This data was developed using the same antibody clone with 16352-1-PBS in a different storage buffer formulation.



Immunofluorescent analysis of (4% PFA) fixed HeLa cells using PSG11 antibody (16352-1-AP) at dilution of 1:400 and Coralite@488-Conjugated Goat Anti-Rabbit IgG(H+L) (SA00013-2), CL594-phalloidin (red). This data was developed using the same antibody clone with 16352-1-PBS in a different storage buffer formulation.