

For Research Use Only

PAH Polyclonal antibody

Catalog Number: 16347-1-AP

4 Publications



Basic Information

Catalog Number:

16347-1-AP

Size:

350 µg/ml

Source:

Rabbit

Isotype:

IgG

Immunogen Catalog Number:

AG9541

GenBank Accession Number:

BC026251

GeneID (NCBI):

5053

UNIPROT ID:

P00439

Full Name:

phenylalanine hydroxylase

Calculated MW:

452 aa, 52 kDa

Observed MW:

52 kDa

Purification Method:

Antigen affinity purification

Recommended Dilutions:

WB 1:500-1:1000

IHC 1:50-1:500

Applications

Tested Applications:

IHC, WB, ELISA

Cited Applications:

WB, IHC

Species Specificity:

human, mouse

Cited Species:

human, mouse

Positive Controls:

WB : HepG2 cells, mouse kidney tissue

IHC : human liver cancer tissue,

Note-IHC: suggested antigen retrieval with TE buffer pH 9.0; (*) Alternatively, antigen retrieval may be performed with citrate buffer pH 6.0

Background Information

PAH, also known as PH, belongs to the aromatic amino acid hydroxylase (AAAH) enzyme family. PAH catalyzes the conversion of L-phenylalanine (L-Phe) to L-tyrosine (L-Tyr) by para-hydroxylation of the aromatic side chain. PAH is primarily present in the liver, where removal of excess L-Phe prevents the neurotoxic effect of hyperphenylalaninemia (HPA). The calculated molecular weight of PAH is 52 kDa (PMID: 23457044).

Notable Publications

Author	Pubmed ID	Journal	Application
Angel Loza-Valdes	34145024	Life Sci Alliance	WB
Changzheng Li	35080145	Adv Sci (Weinh)	WB
Yunjie Wang	33915296	Pharmacol Res	WB

Storage

Storage:

Store at -20°C. Stable for one year after shipment.

Storage Buffer:

PBS with 0.02% sodium azide and 50% glycerol pH 7.3.

Aliquoting is unnecessary for -20°C storage

For technical support and original validation data for this product please contact:

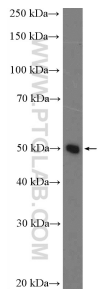
T: 4006900926

E: Proteintech-CN@ptglab.com

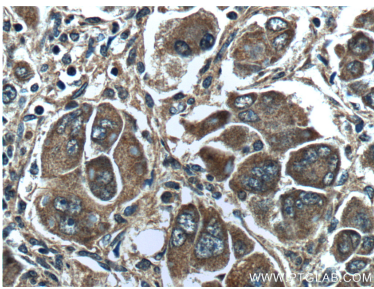
W: ptgcn.com

This product is exclusively available under Proteintech Group brand and is not available to purchase from any other manufacturer.

Selected Validation Data



HepG2 cells were subjected to SDS PAGE followed by western blot with 16347-1-AP (PAH Antibody) at dilution of 1:600 incubated at room temperature for 1.5 hours.



Immunohistochemical analysis of paraffin-embedded human liver cancer tissue slide using 16347-1-AP (PAH Antibody) at dilution of 1:200 (under 40x lens).