

For Research Use Only

# SLC35A1 Polyclonal antibody

Catalog Number: 16342-1-AP

Featured Product

3 Publications



## Basic Information

Catalog Number:

16342-1-AP

Size:

550 ug/ml

Source:

Rabbit

Isotype:

IgG

Immunogen Catalog Number:

AG9524

GenBank Accession Number:

BC017807

GeneID (NCBI):

10559

UNIPROT ID:

P78382

Full Name:

solute carrier family 35 (CMP-sialic acid transporter), member A1

Calculated MW:

337 aa, 37 kDa

Observed MW:

30-33 kDa

Purification Method:

Antigen affinity purification

Recommended Dilutions:

IHC 1:50-1:500

IF/ICC 1:200-1:800

## Applications

Tested Applications:

IHC, IF/ICC, ELISA

Cited Applications:

WB, IHC, IF

Species Specificity:

human, mouse, rat

Cited Species:

human

**Note-IHC: suggested antigen retrieval with TE buffer pH 9.0; (\*) Alternatively, antigen retrieval may be performed with citrate buffer pH 6.0**

Positive Controls:

IHC : mouse spleen tissue, mouse testis tissue, human skin tissue, human spleen tissue

IF/ICC : HepG2 cells,

## Background Information

Solute carrier family 35 member A1 (SLC35A1), also named as CMP-sialic acid transporter (CST), is responsible for transferring CMP-sialic acid from the cytosol through Golgi membranes, thus playing a vital role in the terminal sialylation of glycan structures. SLC35A1 deficiency causes thrombocytopenia due to impaired megakaryocytopoiesis and excessive platelet clearance in the liver. In addition, SLC35A1 acts independently from sialic acid in functional  $\alpha$ -DG O-mannosylation (PMID: 25552652).

## Notable Publications

Author	Pubmed ID	Journal	Application
Yalong Wang	31753849	J Exp Med	IHC
Antje Banning	34069698	Cells	WB, IF
Jessie Kulsuptrakul	33730579	Cell Rep	WB

## Storage

Storage:

Store at -20°C. Stable for one year after shipment.

Storage Buffer:

PBS with 0.02% sodium azide and 50% glycerol pH 7.3.

Aliquoting is unnecessary for -20°C storage

For technical support and original validation data for this product please contact:

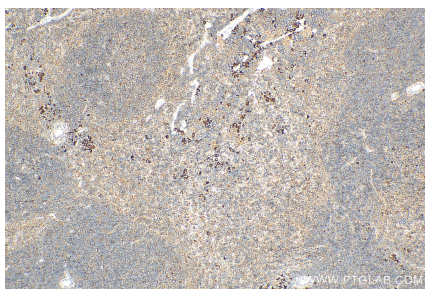
T: 4006900926

E: [Proteintech-CN@ptglab.com](mailto:Proteintech-CN@ptglab.com)

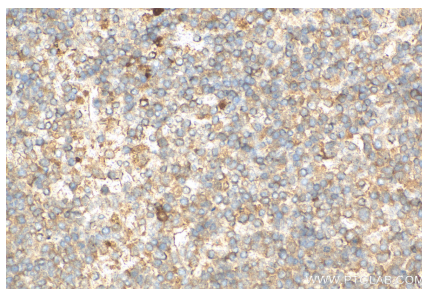
W: [ptgcn.com](http://ptgcn.com)

This product is exclusively available under Proteintech Group brand and is not available to purchase from any other manufacturer.

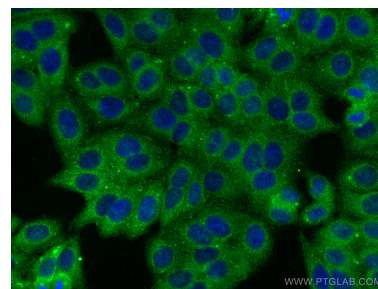
## Selected Validation Data



Immunohistochemical analysis of paraffin-embedded mouse spleen tissue slide using 16342-1-AP (SLC35A1 antibody) at dilution of 1:200 (under 10x lens). Heat mediated antigen retrieval with Tris-EDTA buffer (pH 9.0).



Immunohistochemical analysis of paraffin-embedded mouse spleen tissue slide using 16342-1-AP (SLC35A1 antibody) at dilution of 1:200 (under 40x lens). Heat mediated antigen retrieval with Tris-EDTA buffer (pH 9.0).



Immunofluorescent analysis of (4% PFA) fixed HepG2 cells using SLC35A1 antibody (16342-1-AP) at dilution of 1:400 and CoraLite@488-Conjugated AffiniPure Goat Anti-Rabbit IgG(H+L).