

For Research Use Only

# GPR146 Polyclonal antibody

Catalog Number: 16334-1-AP



## Basic Information

<b>Catalog Number:</b> 16334-1-AP	<b>GenBank Accession Number:</b> BC014241	<b>Purification Method:</b> Antigen affinity purification
<b>Size:</b> 300 µg/ml	<b>GeneID (NCBI):</b> 115330	<b>Recommended Dilutions:</b> IHC 1:50-1:500
<b>Source:</b> Rabbit	<b>UNIPROT ID:</b> Q96CH1	
<b>Isotype:</b> IgG	<b>Full Name:</b> G protein-coupled receptor 146	
<b>Immunogen Catalog Number:</b> AG9456	<b>Calculated MW:</b> 333 aa, 37 kDa	

## Applications

<b>Tested Applications:</b> IHC, ELISA	<b>Positive Controls:</b> IHC : mouse liver tissue, mouse kidney tissue
<b>Species Specificity:</b> human, mouse	

**Note-IHC: suggested antigen retrieval with TE buffer pH 9.0; (\*) Alternatively, antigen retrieval may be performed with citrate buffer pH 6.0**

## Background Information

As a member of GPCRs, GPR146 (G protein-coupled receptor 146) was initially discovered as a c-peptide signal body. GPR146 may act as a c peptide receptor to interact with proinsulin c-peptide to regulate insulin levels (PMID: 37926274). Mechanically, GPR146 induces hepatic sterol regulatory element binding protein 2 (SREBP2) via the activation of extracellular signal-regulated kinase 1/2 (ERK1/2) signaling, consequently resulting in hepatic low-density lipoprotein (VLDL) secretion (PMID: 32491159).

## Storage

**Storage:**  
Store at -20°C. Stable for one year after shipment.  
**Storage Buffer:**  
PBS with 0.02% sodium azide and 50% glycerol pH 7.3.  
Aliquoting is unnecessary for -20°C storage

For technical support and original validation data for this product please contact:

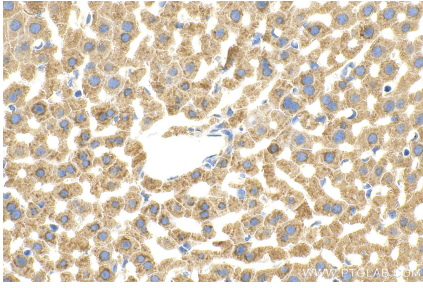
T: 4006900926

E: [Proteintech-CN@ptglab.com](mailto:Proteintech-CN@ptglab.com)

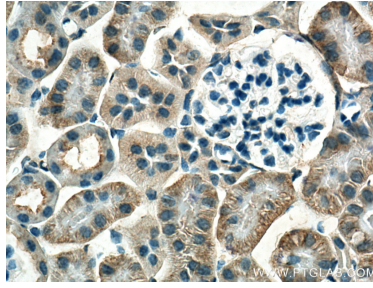
W: [ptgcn.com](http://ptgcn.com)

**This product is exclusively available under Proteintech Group brand and is not available to purchase from any other manufacturer.**

## Selected Validation Data



Immunohistochemical analysis of paraffin-embedded mouse liver tissue slide using 16334-1-AP (GPR146 antibody) at dilution of 1:200 (under 40x lens). Heat mediated antigen retrieval with Tris-EDTA buffer (pH 9.0).



Immunohistochemical analysis of paraffin-embedded mouse kidney tissue slide using 16334-1-AP (GPR146 antibody) at dilution of 1:200 (under 40x lens). Heat mediated antigen retrieval with Tris-EDTA buffer (pH 9.0).