

For Research Use Only

Placental lactogen Polyclonal antibody, PBS Only

Catalog Number: 16326-1-PBS



Basic Information

Catalog Number:

16326-1-PBS

Source:

Rabbit

Isotype:

IgG

Immunogen Catalog Number:

AG9412

GenBank Accession Number:

BC022044

GeneID (NCBI):

1443

UNIPROT ID:

P01243

Full Name:

chorionic somatomammotropin
hormone 2

Calculated MW:

217 aa, 25 kDa

Observed MW:

20-25 kDa

Purification Method:

Antigen affinity purification

Applications

Tested Applications:

WB, IHC, IF-P, Indirect ELISA

Species Specificity:

human

Background Information

The human growth hormone (GH) locus is comprised by two GH (GH1 and GH2) genes and three chorionic somatomammotropin (CSH1, CSH2 and CSH-L) genes. Placental lactogens (CSH1, CSH2) are produced in the mammalian placenta and are similar in structure and function to growth hormones. Together, placental lactogens and growth factors play an essential role to assure successful lactation after pregnancy. Placental lactogens also modify the metabolic state of the mother during pregnancy to supply energy to the fetus.

Storage

Storage:

Store at -80°C.

The product is shipped with ice packs. Upon receipt, store it immediately at -80°C

Storage Buffer:

PBS only, pH7.3

For technical support and original validation data for this product please contact:

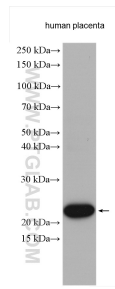
T: 4006900926

E: Proteintech-CN@ptglab.com

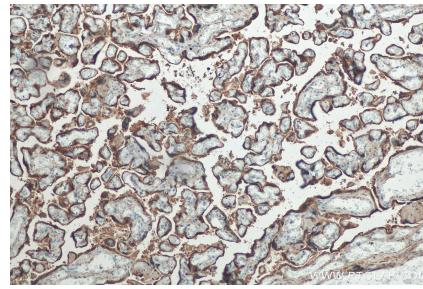
W: ptgcn.com

This product is exclusively available under Proteintech Group brand and is not available to purchase from any other manufacturer.

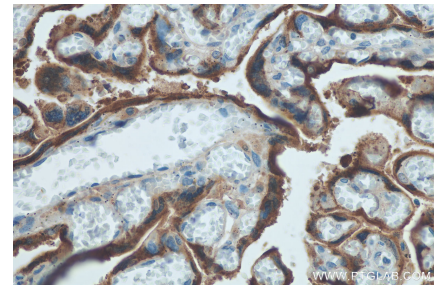
Selected Validation Data



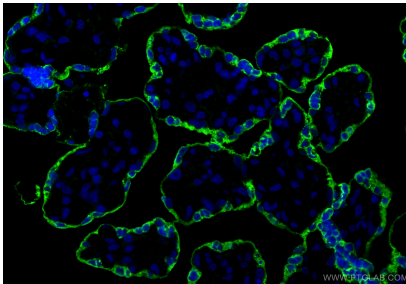
Human placenta tissue were subjected to SDS PAGE followed by western blot with 16326-1-AP (Placental lactogen antibody) at dilution of 1:4000 incubated at room temperature for 1.5 hours. This data was developed using the same antibody clone with 16326-1-PBS in a different storage buffer formulation.



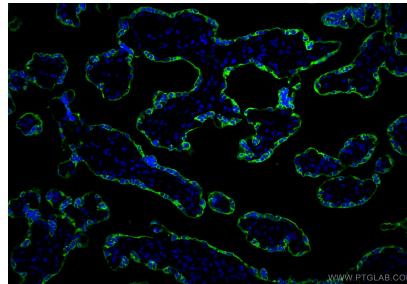
Immunohistochemical analysis of paraffin-embedded human placenta tissue slide using 16326-1-AP (Placental lactogen antibody) at dilution of 1:200 (under 10x lens). Heat mediated antigen retrieval with Tris-EDTA buffer (pH 9.0). This data was developed using the same antibody clone with 16326-1-PBS in a different storage buffer formulation.



Immunohistochemical analysis of paraffin-embedded human placenta tissue slide using 16326-1-AP (Placental lactogen antibody) at dilution of 1:200 (under 40x lens). Heat mediated antigen retrieval with Tris-EDTA buffer (pH 9.0). This data was developed using the same antibody clone with 16326-1-PBS in a different storage buffer formulation.



Immunofluorescent analysis of (4% PFA) fixed paraffin-embedded human placenta tissue using Placental lactogen antibody (16326-1-AP) at dilution of 1:200 and CoralLite@488-Conjugated Goat Anti-Rabbit IgG(H+L) (SA00013-2). Heat mediated antigen retrieval with Tris-EDTA buffer (pH 9.0). This data was developed using the same antibody clone with 16326-1-PBS in a different storage buffer formulation.



Immunofluorescent analysis of (4% PFA) fixed paraffin-embedded human placenta tissue using Placental lactogen antibody (16326-1-AP) at dilution of 1:200 and CoralLite@488-Conjugated Goat Anti-Rabbit IgG(H+L) (SA00013-2). Heat mediated antigen retrieval with Tris-EDTA buffer (pH 9.0). This data was developed using the same antibody clone with 16326-1-PBS in a different storage buffer formulation.