

For Research Use Only

# BACE2 Polyclonal antibody

Catalog Number: 16321-1-AP **2 Publications**



## Basic Information

<b>Catalog Number:</b> 16321-1-AP	<b>GenBank Accession Number:</b> BC014453	<b>Purification Method:</b> Antigen affinity purification
<b>Size:</b> 500 µg/ml	<b>GeneID (NCBI):</b> 25825	<b>Recommended Dilutions:</b> WB 1:500-1:1000 IHC 1:50-1:500
<b>Source:</b> Rabbit	<b>UNIPROT ID:</b> Q9Y5Z0	
<b>Isotype:</b> IgG	<b>Full Name:</b> beta-site APP-cleaving enzyme 2	
<b>Immunogen Catalog Number:</b> AG9404	<b>Calculated MW:</b> 518 aa, 56 kDa	
	<b>Observed MW:</b> 60 kDa	

## Applications

<b>Tested Applications:</b> IHC, WB, ELISA	<b>Positive Controls:</b> WB : HEK-293 cells, HeLa cells, SH-SY5Y cells
<b>Cited Applications:</b> WB	<b>IHC :</b> human colon cancer tissue, human breast cancer tissue
<b>Species Specificity:</b> human, mouse, rat	
<b>Cited Species:</b> human, mouse	

**Note-IHC: suggested antigen retrieval with TE buffer pH 9.0; (\*) Alternatively, antigen retrieval may be performed with citrate buffer pH 6.0**

## Background Information

### Notable Publications

Author	Pubmed ID	Journal	Application
Linbin Dai	34500034	Brain Behav Immun	WB
Yayun Du	31928492	Int J Neurosci	WB

## Storage

**Storage:**  
Store at -20°C. Stable for one year after shipment.  
**Storage Buffer:**  
PBS with 0.02% sodium azide and 50% glycerol pH 7.3.  
Aliquoting is unnecessary for -20°C storage

For technical support and original validation data for this product please contact:

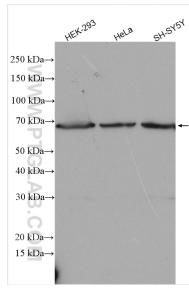
T: 4006900926

E: Proteintech-CN@ptglab.com

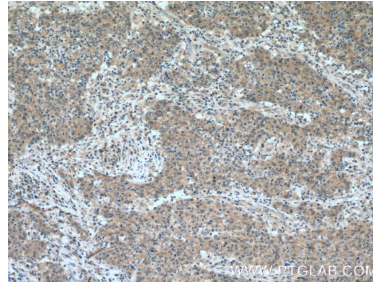
W: ptgcn.com

**This product is exclusively available under Proteintech Group brand and is not available to purchase from any other manufacturer.**

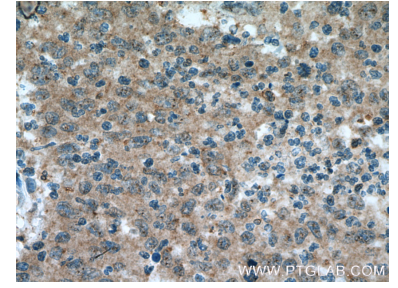
## Selected Validation Data



Various lysates were subjected to SDS PAGE followed by western blot with 16321-1-AP (BACE2 antibody) at dilution of 1:800 incubated at room temperature for 1.5 hours.



Immunohistochemical analysis of paraffin-embedded human colon cancer tissue slide using 16321-1-AP (BACE2 Antibody) at dilution of 1:200 (under 10x lens). Heat mediated antigen retrieval with Tris-EDTA buffer (pH 9.0).



Immunohistochemical analysis of paraffin-embedded human colon cancer tissue slide using 16321-1-AP (BACE2 Antibody) at dilution of 1:200 (under 40x lens). Heat mediated antigen retrieval with Tris-EDTA buffer (pH 9.0).