

For Research Use Only

SMPDL3A Polyclonal antibody, PBS Only

Catalog Number: 16310-1-PBS



Basic Information

Catalog Number:

16310-1-PBS

Source:

Rabbit

Isotype:

IgG

Immunogen Catalog Number:

AG9340

GenBank Accession Number:

BC018999

GeneID (NCBI):

10924

UNIPROT ID:

Q92484

Full Name:

sphingomyelin phosphodiesterase, acid-like 3A

Calculated MW:

453 aa, 51 kDa

Observed MW:

51 kDa

Purification Method:

Antigen affinity purification

Applications

Tested Applications:

WB, Indirect ELISA

Species Specificity:

human, rat

Background Information

Sphingomyelin phosphodiesterase acid-like 3A (SMPDL3A) is a secreted metallophosphoesterase belonging to the calcineurin-like phosphoesterase superfamily, closely related to acid sphingomyelinase (ASMase). Despite its name, SMPDL3A lacks activity against sphingomyelin and instead functions as a nucleotide phosphodiesterase, hydrolyzing nucleoside di- and triphosphates such as ATP. The enzyme contains a binuclear zinc center in its active site and exhibits an acidic pH optimum. The expression of SMPDL3A is induced by cholesterol loading and liver X receptor (LXR) ligands. Recent studies have identified SMPDL3A as a negative regulator of innate immunity by degrading 2'3'-cGAMP, thereby inhibiting the cGAS-STING signaling pathway.

Storage

Storage:

Store at -80°C.

The product is shipped with ice packs. Upon receipt, store it immediately at -80°C

Storage Buffer:

PBS only, pH7.3

For technical support and original validation data for this product please contact:

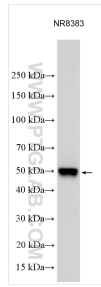
T: 4006900926

E: Proteintech-CN@ptglab.com

W: ptgcn.com

This product is exclusively available under Proteintech Group brand and is not available to purchase from any other manufacturer.

Selected Validation Data



Various lysates were subjected to SDS PAGE followed by western blot with 16310-1-AP (SMPDL3A antibody) at dilution of 1:3000 incubated at room temperature for 1.5 hours. This data was developed using the same antibody clone with 16310-1-PBS in a different storage buffer formulation.