

For Research Use Only

Claudin 15 Polyclonal antibody, PBS Only

Catalog Number: 16302-1-PBS



Basic Information

Catalog Number: 16302-1-PBS	GenBank Accession Number: BC010160	Purification Method: Antigen affinity purification
Size: 1 mg/ml	GeneID (NCBI): 24146	
Source: Rabbit	UNIPROT ID: P56746	
Isotype: IgG	Full Name: claudin 15	
Immunogen Catalog Number: AG9124	Calculated MW: 128aa, 14 kDa; 228aa, 24 kDa	
	Observed MW: 24-26 kDa	

Applications

Tested Applications:
WB, Indirect ELISA

Species Specificity:
human, mouse, rat

Background Information

Claudins are a family of proteins that are the most important components of tight junctions, where they establish the paracellular barrier that controls the flow of molecules in the intercellular space between the cells of an epithelium. 23 claudins have been identified. They are small (20-27 kilodalton (kDa)) proteins with very similar structure. They have four transmembrane domains, with the N-terminus and the C-terminus in the cytoplasm. Claudin family member Claudin-15 is a classic tight junction molecule.

Storage

Storage:
Store at -80°C.
The product is shipped with ice packs. Upon receipt, store it immediately at -80°C

Storage Buffer:
PBS Only

For technical support and original validation data for this product please contact:

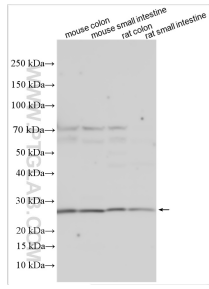
T: 4006900926

E: Proteintech-CN@ptglab.com

W: ptgcn.com

This product is exclusively available under Proteintech Group brand and is not available to purchase from any other manufacturer.

Selected Validation Data



Various lysates were subjected to SDS PAGE followed by western blot with 16302-1-AP (Claudin 15 antibody) at dilution of 1:1000 incubated at room temperature for 1.5 hours. This data was developed using the same antibody clone with 16302-1-PBS in a different storage buffer formulation.