

For Research Use Only

HN1L Polyclonal antibody, PBS Only

Catalog Number:16285-1-PBS



Basic Information

Catalog Number:

16285-1-PBS

Source:

Rabbit

Isotype:

IgG

Immunogen Catalog Number:

AG9400

GenBank Accession Number:

BC014438

GeneID (NCBI):

90861

UNIPROT ID:

Q9H910

Full Name:

hematological and neurological expressed 1-like

Calculated MW:

190 aa, 20 kDa

Observed MW:

20-25 kDa

Purification Method:

Antigen affinity purification

Applications

Tested Applications:

WB, IHC, IF/ICC, Indirect ELISA

Species Specificity:

human

Background Information

Hematological and neurological expressed 1-like protein (HN1L), also known as Jupiter microtubule-associated homolog 2 (JPT2), belongs to the jupiter family. HN1L is nicotinic acid adenine dinucleotide phosphate (NAADP) binding protein required for NAADP-evoked intracellular calcium release (PubMed:33758061). HN1L enables NAADP to activate Ca²⁺ release from the endoplasmic reticulum through ryanodine receptors (PubMed:33758062). HN1L was also required for the translocation of a severe acute respiratory syndrome coronavirus 2 (SARS-CoV-2) pseudovirus through the endolysosomal system HN1L is expressed in liver, kidney, prostate, testis and uterus (PMID: 15094197).

Storage

Storage:

Store at -80°C.

The product is shipped with ice packs. Upon receipt, store it immediately at -80°C

Storage Buffer:

PBS only, pH7.3

For technical support and original validation data for this product please contact:

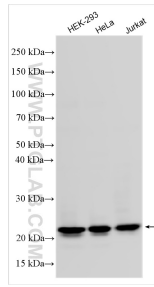
T: 4006900926

E: Proteintech-CN@ptglab.com

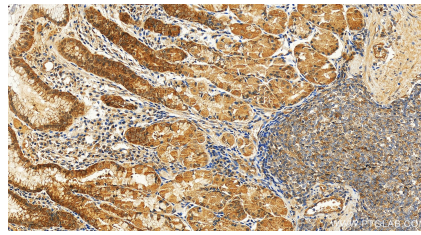
W: ptgcn.com

This product is exclusively available under Proteintech Group brand and is not available to purchase from any other manufacturer.

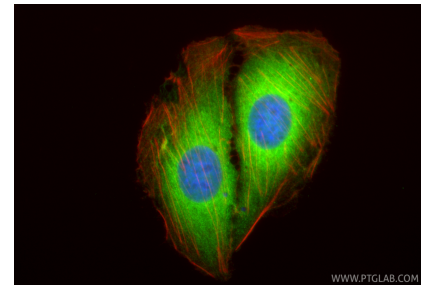
Selected Validation Data



Various lysates were subjected to SDS PAGE followed by western blot with 16285-1-AP (HN1L antibody) at dilution of 1:15000 incubated at room temperature for 1.5 hours. This data was developed using the same antibody clone with 16285-1-PBS in a different storage buffer formulation.



Immunohistochemical analysis of paraffin-embedded human stomach tissue slide using 16285-1-AP (HN1L antibody) at dilution of 1:600 (under 20x lens). Heat mediated antigen retrieval with Tris-EDTA buffer (pH 9.0). This data was developed using the same antibody clone with 16285-1-PBS in a different storage buffer formulation.



Immunofluorescent analysis of (4% PFA) fixed U2OS cells using HN1L antibody (16285-1-AP) at dilution of 1:400 and CoraLite@488-Conjugated Goat Anti-Rabbit IgG(H+L) (SA00013-2), CL594-Phalloidin (red). This data was developed using the same antibody clone with 16285-1-PBS in a different storage buffer formulation.